



*Photo credit: Wayne Goeken*



## Section 8

# Appendices



# Sand Hill River Watershed One Watershed, One Plan

## Plan Summary

### What is One Watershed One Plan?

- Voluntary program and plan to guide watershed managers as they work to protect and restore the watershed's resources.
- Aligns water planning along watershed boundaries, including all the Counties, Soil & Water Conservation Districts, and Watershed Districts within the watershed border.
- Local priorities, locally driven.
- Uses existing authorities and funding mechanisms (County, SWCD, and Watershed District Boards)
- After adopted, implementation funding from the state is obtained through a non-competitive process instead of competitive.
- Program website: <https://bwsr.state.mn.us/one-watershed-one-plan>

## Surface Water

Water Quality • Runoff & Flooding



### How:

- Streambank and lakeshore stabilization.
- Septic system replacements.
- AIS prevention and management.
- Increase water storage.
- Flood protection.

### Outcomes:

- Lake and stream water quality protected and improved.
- Runoff from increasing future precipitation is minimized.
- Flood damage reduction.

## Agricultural Productivity

Drainage System Management  
Soil Health

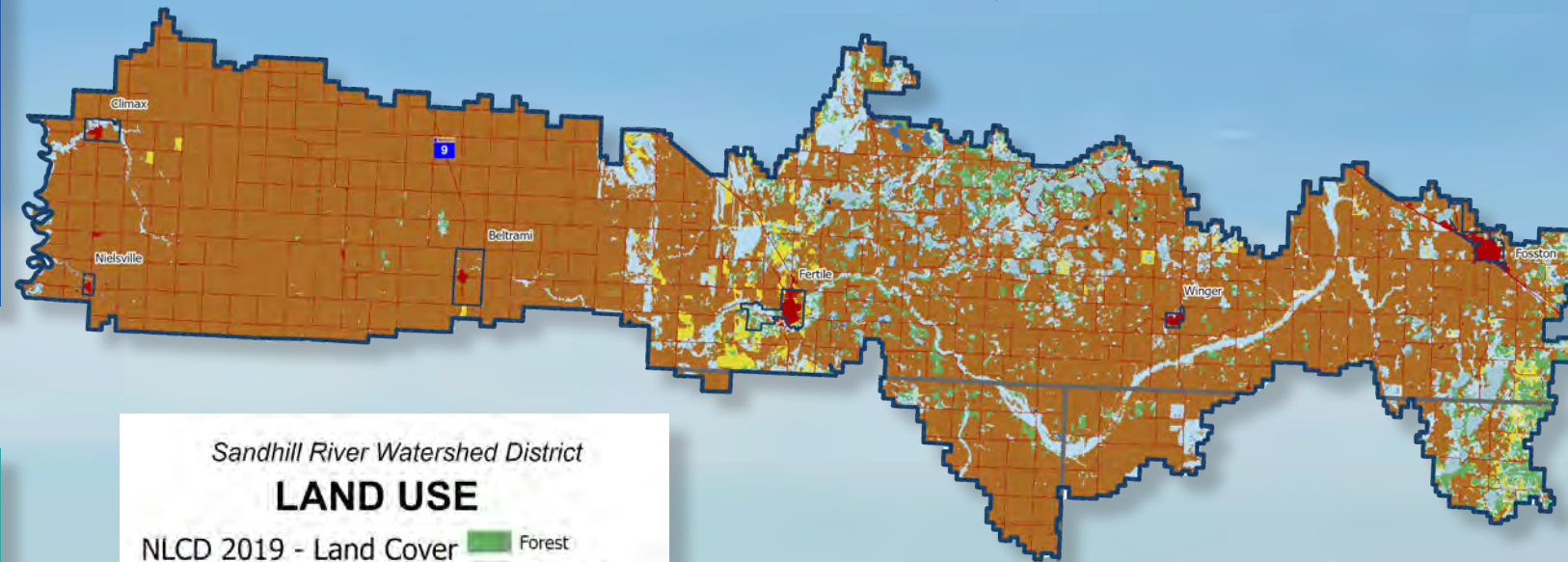


### How:

- Drainage system maintenance and improvement.
- Soil health practices (no till, cover crops).
- Water and sediment control basins.
- Grade stabilizations

### Outcomes:

- Soil health improved.
- Drainage is maintained.
- Nutrients, sediment, and bacteria entering lakes and streams is reduced.
- Flood damage reduction.



## Natural Resources

Aquatic Habitat • Terrestrial Habitat • Wetlands



### How:

- Wetland restoration.
- Prairie habitat protection.
- Land retirement programs (RIM, CRP, CREP).

### Outcomes:

- Forest, prairie, and migratory waterfowl habitat is protected.
- Sensitive and unique plant, animal, and fish species are protected.
- Riparian corridors are protected.

## Groundwater

Drinking Water Quality • Groundwater Quantity



### How:

- Sealing unused wells.
- Protecting drinking water supply management areas.
- Well testing clinics

### Outcomes:

- Safe and plentiful drinking water.
- Groundwater quantity is sustainable.

## Watershed Highlights

- The watershed starts in Sand Hill Lake, just south of Fosston, MN, and drains to the Red River
- The majority of land is in Polk County, with small portions in Mahnommen and Norman Counties, and the White Earth Reservation.
- The Sand Hill River Watershed District covers the full planning area.
- Primary towns include Fosston, Winger, Fertile, Beltrami, and Climax.
- The majority of the land use in the watershed is in agriculture (78%) with small areas of wetlands, prairie, and forest.

## Plan Highlights

- Implementation of the Sand Hill One Watershed One Plan is voluntary, and outreach and incentives will be used to assist with voluntary implementation on private lands.
- This plan includes both restoration and protection priorities.
- This plan incorporates modeling tools (PTMApp) to help identify agricultural practices on the land to reduce erosion. Practices are targeted where they can reduce the most sediment.
- Land practices have stacked benefits such as sediment reduction, water storage, flood damage reduction, water quality improvement, and habitat enhancement.

# Vision Statement

*Created from a small sinuous channel pouring over sand hills, the Sand Hill River Watershed provides farming and recreational opportunities that preserve and promote economic sustainability while maintaining natural resources for future generations.*

## Sand Hill Implementation Team



West Polk Soil and  
Water Conservation  
District  
Crookston MN



Cooperating for  
Conservation  
**Norman County**  
soil & water  
conservation district



**MAHNOMEN COUNTY**  
M I N N E S O T A

**NORMAN COUNTY**  
THE HEART OF THE RED RIVER VALLEY

For a full copy of the plan visit:

<http://www.sandhillwatershed.org/1W1P.html>

Further questions or comments, contact your local  
SWCD, Watershed District, or County.

Sand Hill River Watershed District: 218-945-3204

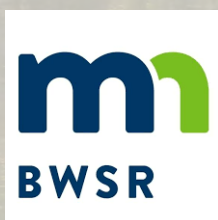
West Polk SWCD: 218-281-6070

East Polk SWCD: 218-563-2777

Polk County: 218-281-5700

Norman SWCD: 218-584-5169

Mahnomen SWCD: 218-935-2987 X3



## Appendix B. Public Input Summary

### Open House

In August of 2022, members of the public in the Sand Hill River Watershed were invited via direct mail post card to attend an open house to learn about the One Watershed One Plan process and to provide input on what issues matter to them. Listening to and incorporating local priorities are an important part of watershed planning. Three meetings were held in different regions of the watershed- at Climax, Fertile, and Fosston.



*Figure 1: Public kickoff meetings at Climax (left), Fertile (top right), and Fosston (bottom right).*

Attendees were invited to give feedback in multiple ways- the meeting had penny voting, resource maps where concerns could be noted, a survey, and a comment station.

## Penny Voting

Penny voting involves attendees voting by placing 3 pennies in jars of the following resources to spend funding on:

- Surface Water (SW)
  - Quality
  - Runoff and flooding
- Natural Resources (NR)
  - Wetlands
  - Terrestrial habitat
  - Aquatic habitat
- Agricultural productivity (AP)
  - Drainage system management
  - Soil health
- Groundwater (GW)
  - Quality
  - Quantity

Figure 2 displays the resource concerns voted on at each public meeting. Overall, surface water quantity (flooding), agricultural drainage, and soil health were top priorities while habitat, groundwater, and wetlands all had 5 or less votes. These responses reflect the prominence of agricultural production in the watershed.

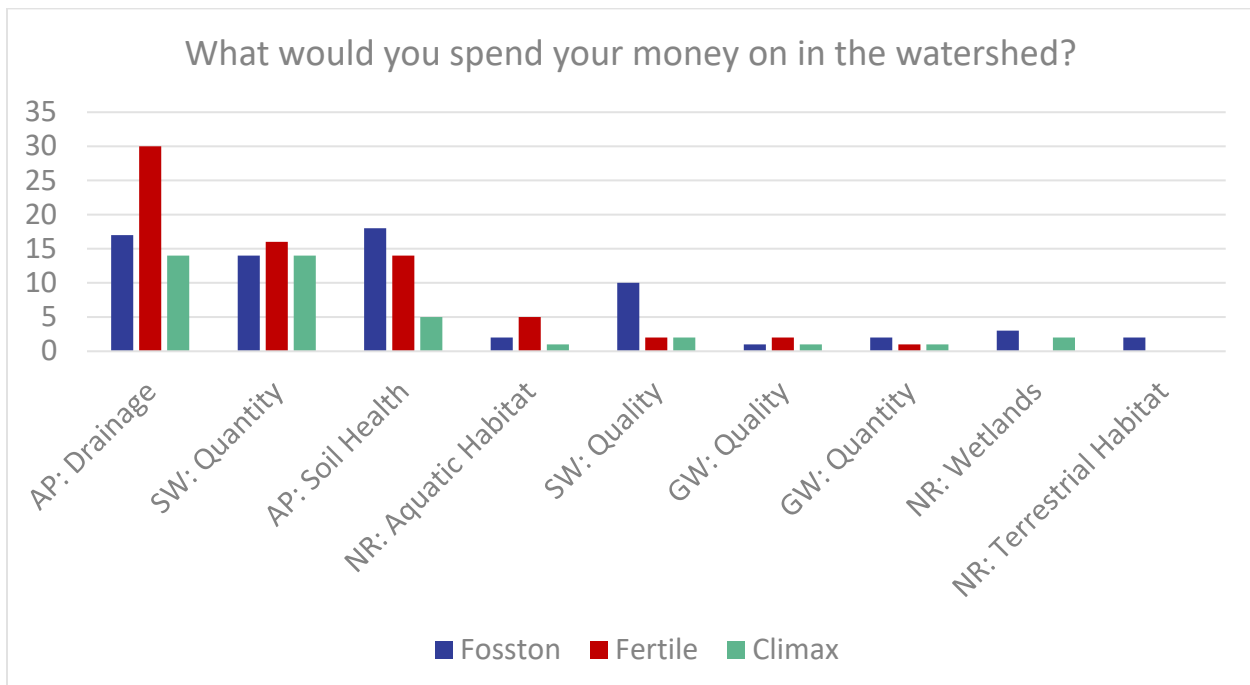


Figure 2: Penny voting results from Fosston, Fertile, and Climax

## Resource Maps

At each location, maps were placed on tables showing different resources such as surface water, land use, natural resources, and groundwater. Participants were invited to write notes about local concerns. These concerns included:

- Spring flooding at Traverse Dam not draining like it should be and could be exacerbated by the Fargo Diversion
- Potential ring dike locations
- Spring flooding on 41 and the need for ring dikes. Release or move water faster.
- Lack of water flow where the Sand Hill River dips into Norman and Mahanomen Counties.

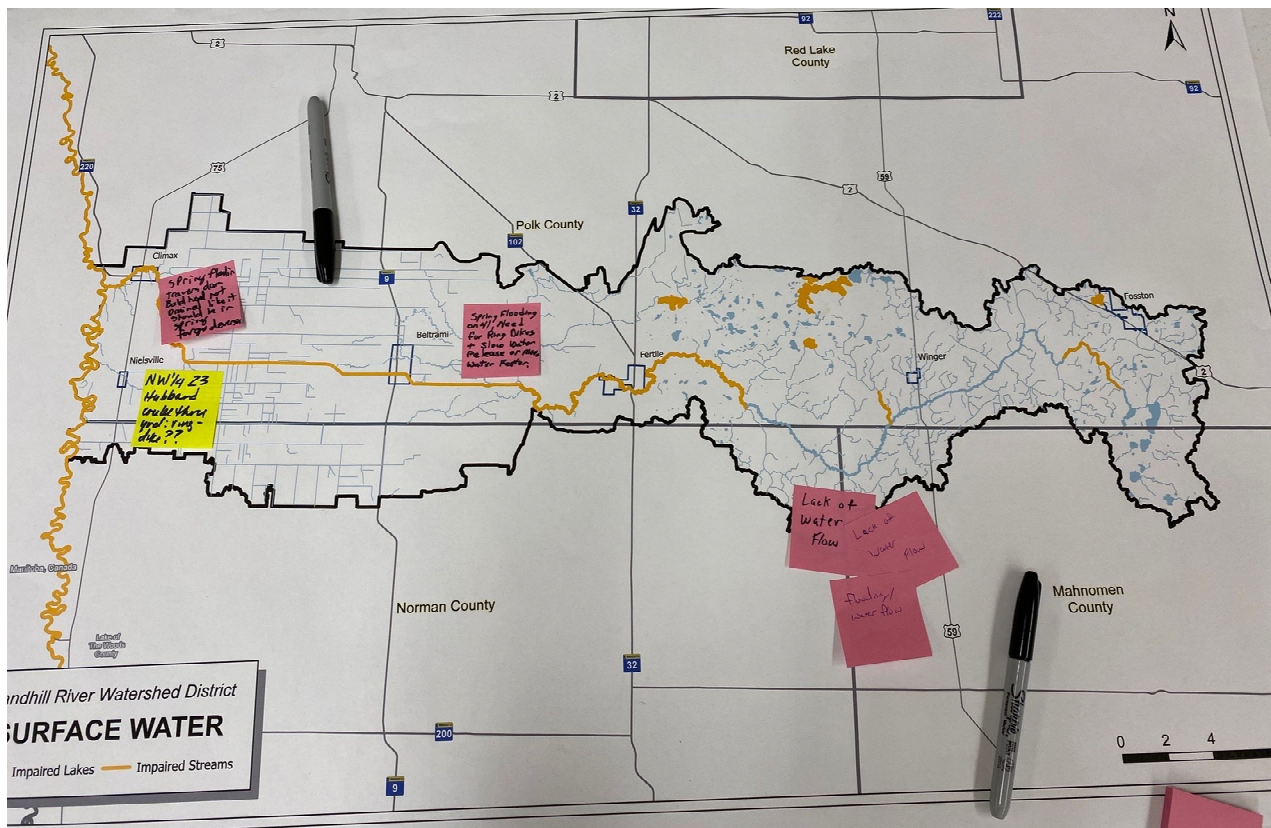
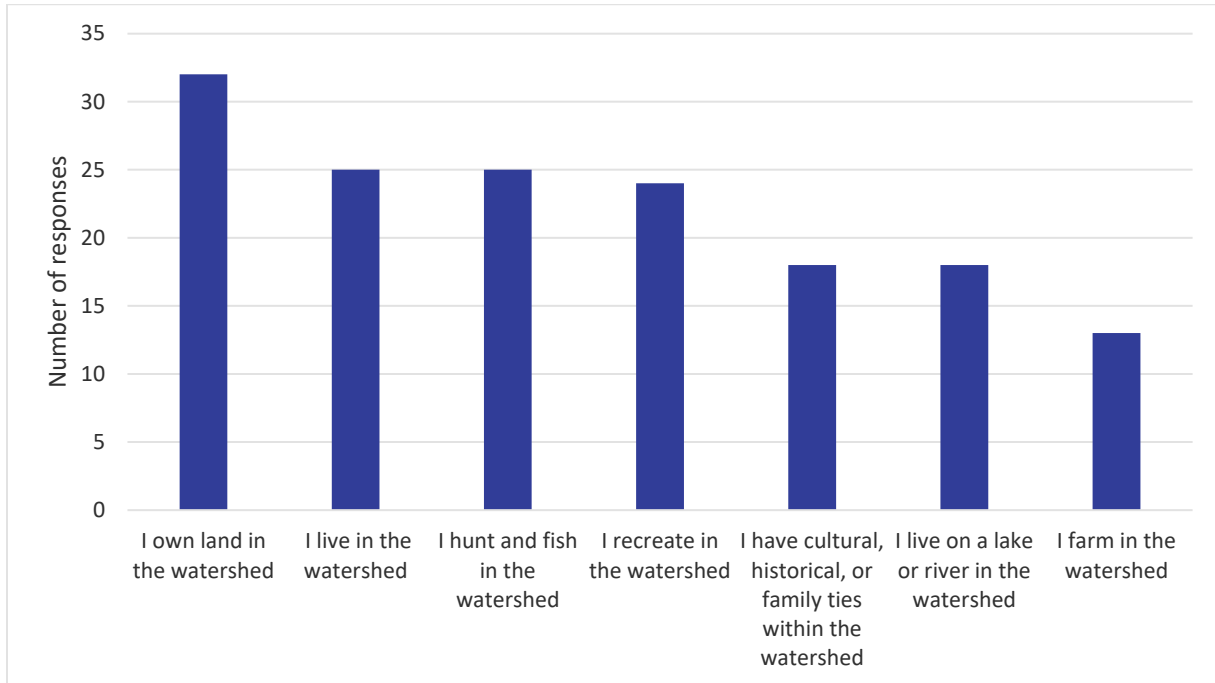


Figure 3. Map from the Open House events.

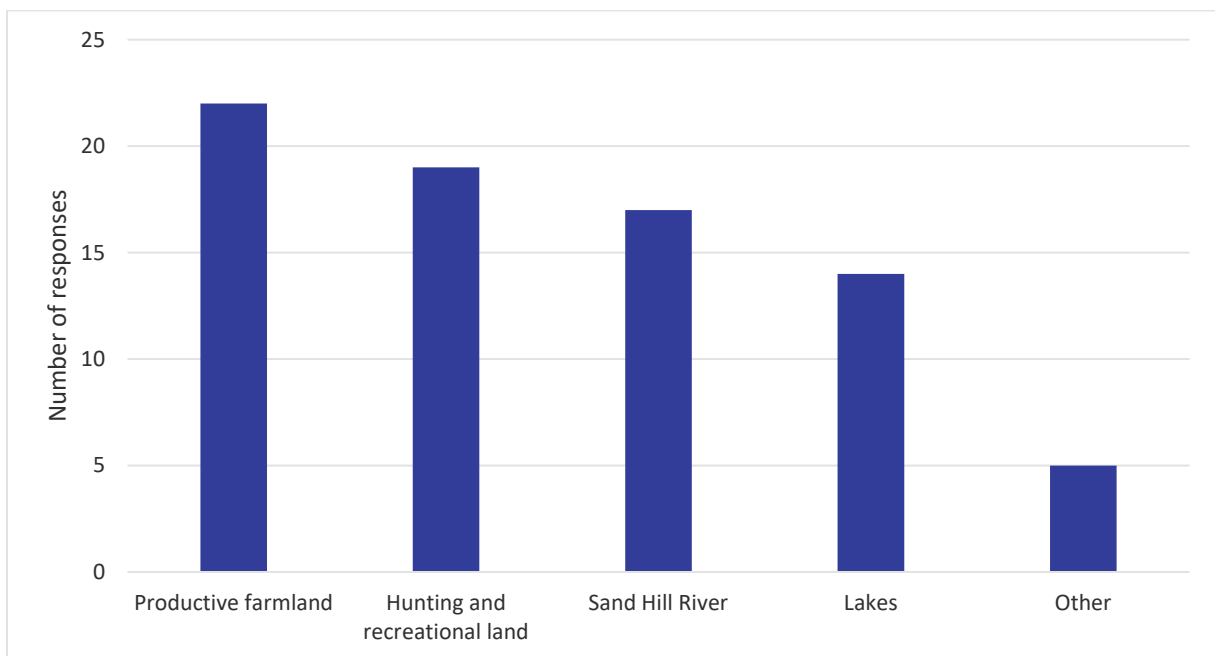
## Public Survey

A survey was distributed at the public meetings and a QR code was placed on the post card mailing. In this way, residents could respond even if they couldn't make it to the open houses. The survey received 45 responses. Results are shown on the next few pages.

In response to 'How do you associate with the watershed?' (choose all that apply):

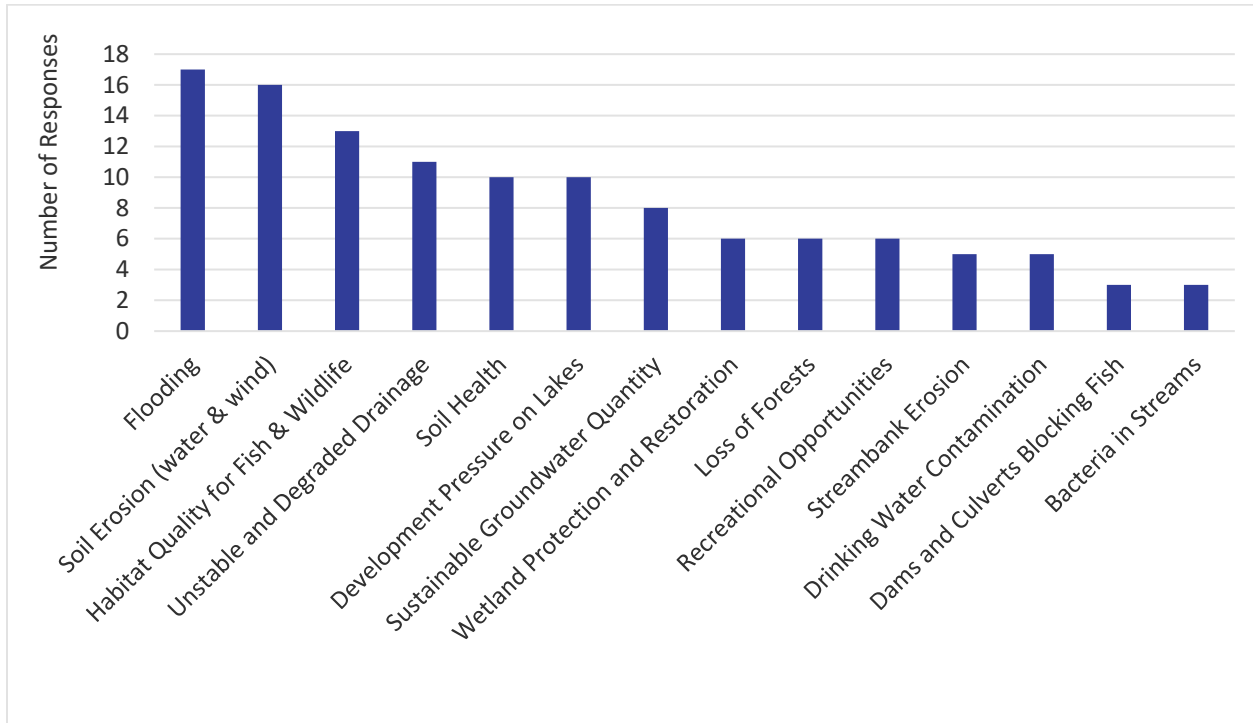


In response to 'What is the most important natural resource to you in your area?' (choose your top 2):

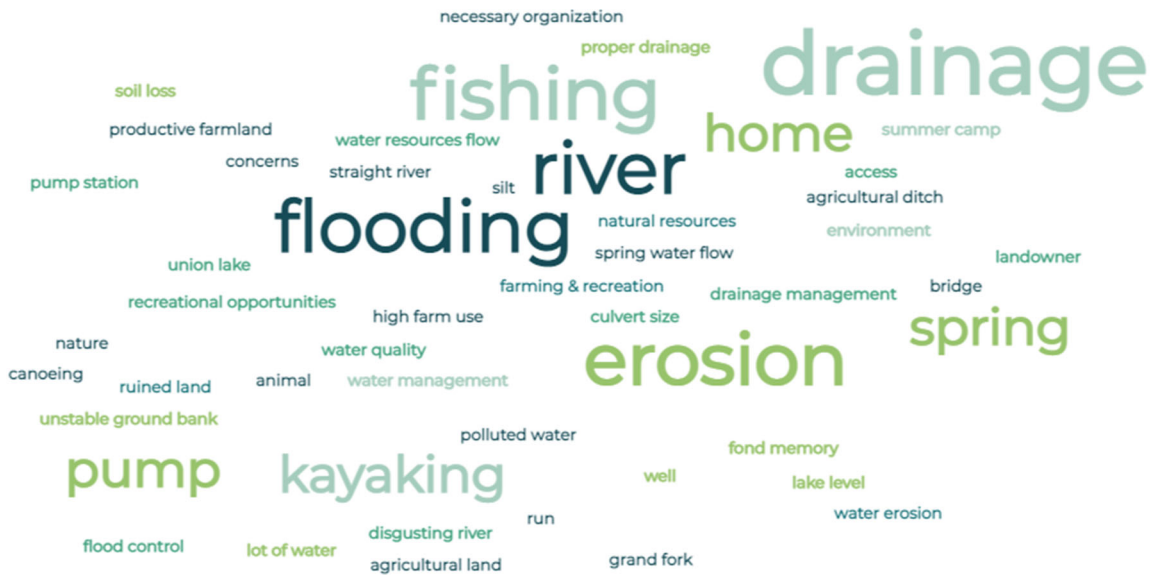




In response to 'What do you see as the largest potential problem or opportunity facing your area?'  
(choose your top 3):



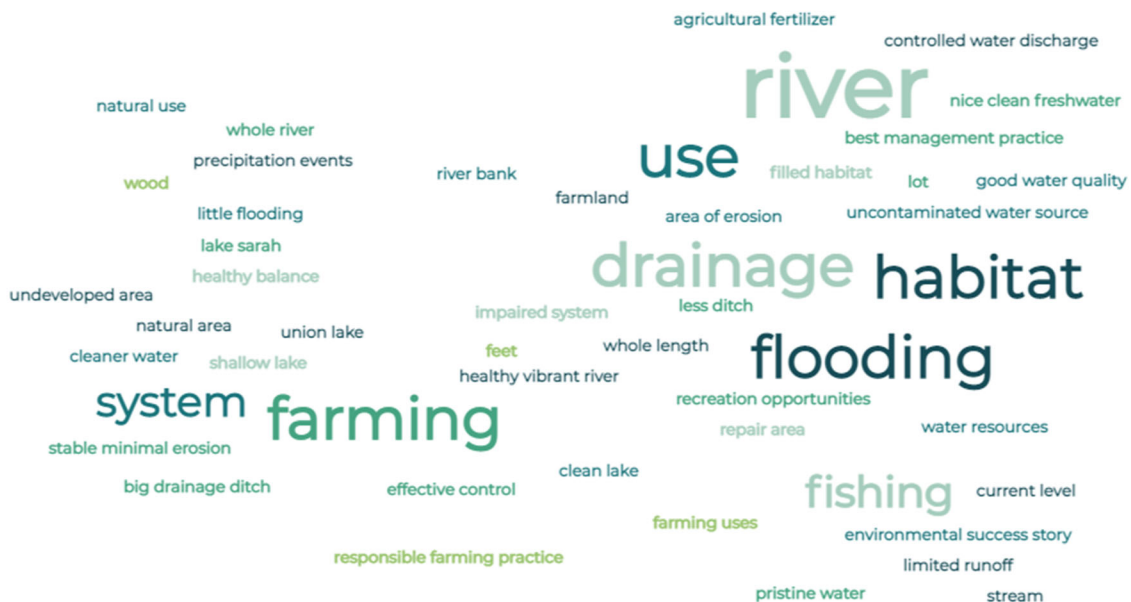
In response to 'Using just 4-5 words, when you think of the Sand Hill River Watershed, what comes to mind?' (the size of the word reflects how often it was mentioned):



In response to ‘Considering the rate of land use change in the watershed, what do you think the watershed will look like in 50 years?’ (the size of the word reflects how often it was mentioned):



In response to ‘What would you like the watershed to look like in 50 years?’ (the size of the word reflects how often it was mentioned):



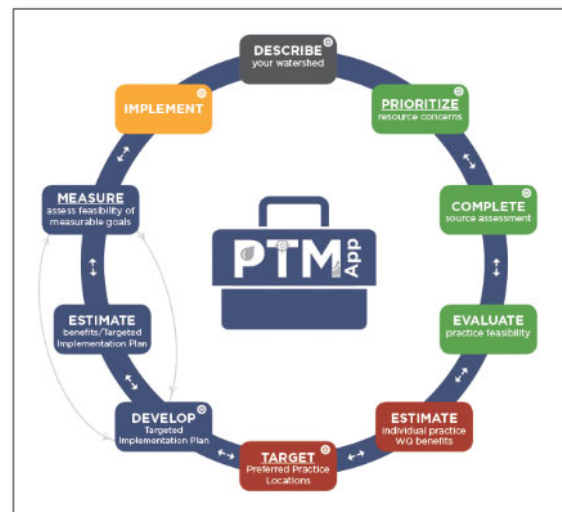
## Appendix C. PTMApp Scenario

The Targeted Implementation Schedule in Section 5 of this plan is based on a PTMApp Implementation Scenario developed by the Steering Committee during the planning process. For the purpose of planning, this implementation scenario is summarized more broadly in Section 5 to enable flexibility during implementation. This Appendix details the decisions made and shows the Best Management Practices targeting maps that resulted from the implementation scenario.

### Introduction

The Prioritize, Target, and Measure Application (PTMApp) is a program that can be used by practitioners as a technical bridge from general descriptions of implementation strategies in a local water plan to the identification of implementable on-the-ground Best Management Practices (BMPs) and Conservation Practices (CPs).

PTMApp can be used by Soil and Water Conservation District (SWCD), watershed district, county local water planning, and agency staff and decision-makers to PRIORITIZE resources and the issues impacting them, TARGET specific fields to place CPs and BMPs, and MEASURE water quality improvement by tracking the expected nutrient and sediment load reductions delivered to priority resources.



The tool enables practitioners to build prioritized and targeted implementation scenarios, measure the cost-effectiveness of the scenario for improving water quality, and report the results to pursue funds for project implementation.

### Sand Hill Watershed Approach

PTMApp is a powerful tool, and the decisions made during the analysis shape the desired output. The Steering Committee discussed the PTMApp decisions at meetings in January and February of 2023. The decisions are summarized in Table 1.

Table 1. PTMApp decisions made by the Steering Committee on January 18, 2023.

| # | Decision   | Implications   | Local Decision  |
|---|--|--|---|
| 1 | Criteria used to further screen practices  | Criteria are used to further screen practices considered technically feasible for implementation but are not practicable to implement.   | Usual HEI criteria.   |
| 2 | Preferred Practices  | Which NRCS practices to include in the Implementation Scenario. The primary reason for eliminating one or more practice could be a low likelihood of use as a conservation practice.   | See Table 2.  |
| 3 | Costs  | Costs can represent the “cost” share or total cost. For example, EQIP is the government cost share.  | Double EQIP Costs to capture the full cost of the practice + 20% for technical assistance.  |
| 4 | Planning Regions   | Allocate funding and practices per planning region   | 40% Valley and 20% each to the other three Planning Regions.  |
| 5 | Spatial Scale  | The decision reflects the spatial scale for application of the load reduction goals. This decision also affects which BMPs are selected as best. The “best” practice locations tend to be near the location where the load reduction is desired. Using the edge of field will tend to spread practices more evenly across the landscape. Use of a planning region outlet will tend to concentrate the practices upstream of that location. | Group used priority resource points representing planning region outlets to set goals. The benefits of practices will be summarized both at the planning region outlet and the edge of the field. The “best” practices will be selected based on the <b>highest sediment load reduction</b> at the edge of the field and cost effectiveness (spreads out practices within the planning region). |
| 6 | Parameters and method used to rank the “best” conservation practices.                                  | The “best” conservation practices will differ depending on which parameters are used, and whether they are weighted.   | Sediment.   |
| 7 | Process for identifying the number of practices which will be included in the Implementation Scenario. | Decision ultimately affects the “cost(s)” of the Implementation Scenario and ability to achieve the load reduction goals.  | Number of practices that can be afforded under the Funding Level 2 (Baseline + Watershed-Based Implementation Funding).   |

| # | Decision  | Implications   | Local Decision   |
|---|---|--|--|
| 8 | Approach for incorporating volume reduction benefits into the implementation Scenario | Most water quality goals only consider sediment and nutrients. An incorporation of volume reduction benefits to address an altered hydrology goal could be included with other water quality benefits. | Use HEI proprietary tool to attribute each practice with acre-feet storage reduction benefits. |

*Table 2. Preferred conservation practices in the Sand Hill River Watershed District.*

| Conservation Practice Name         | NRCS Code | Notes  |
|------------------------------------|-----------|--|
| Grade Stabilization (includes SWI) | 410       | Split the majority of the funding (after taking out the 5,000 acres of cover crops) between these practices. |
| Water and Sediment Control Basin   | 638       |  |
| Riparian Buffer                    | 390       |  |
| Cover Crops                        | 340       | Limit to 5,000 acres total (that is their watershed-wide short-term goal)                                    |

## Valley Planning Region

The Table below shows the 10-year PTMAApp implementation scenario results for the **Valley Planning Region**. The next page includes a map showing where practices are located.

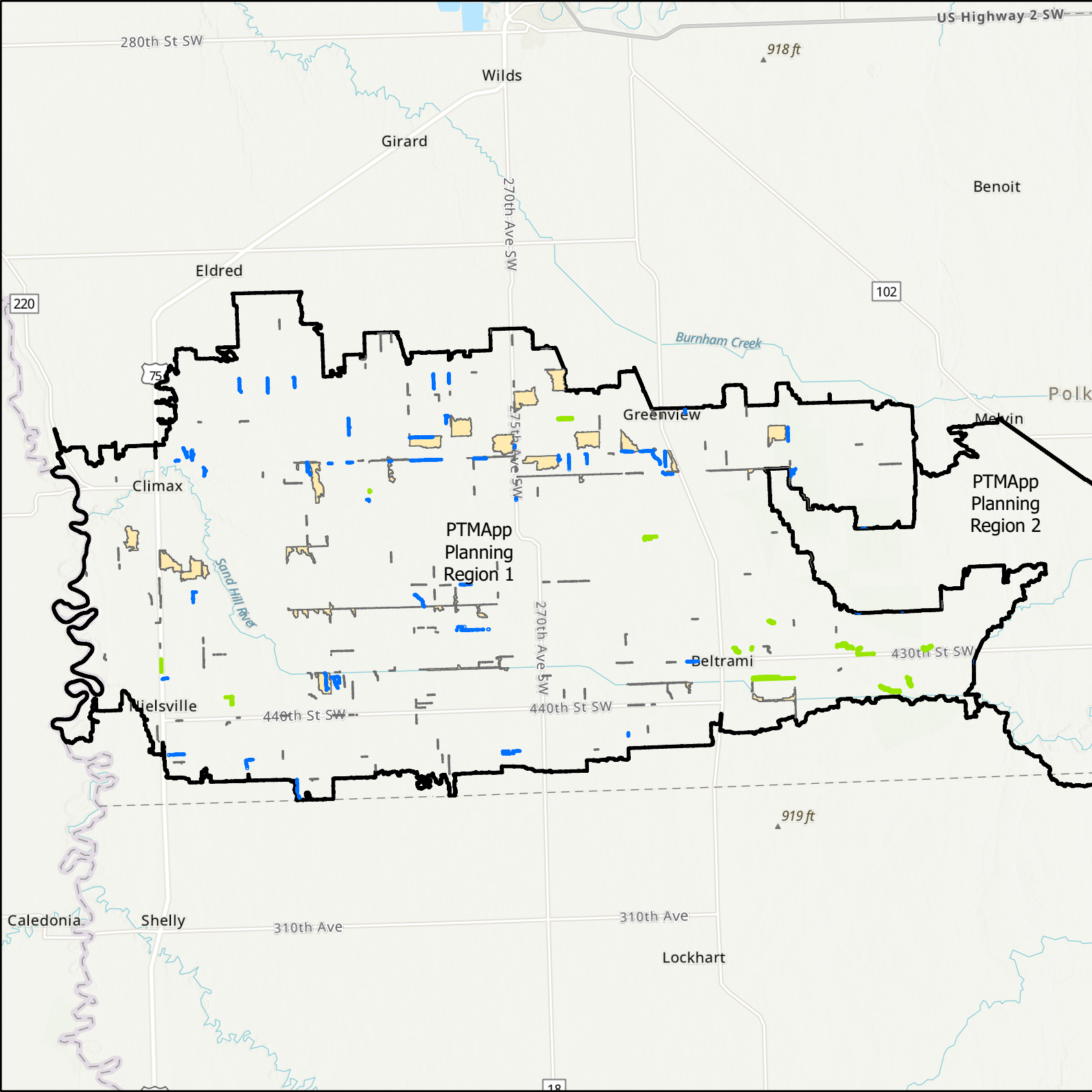
### Scenario Reductions at outlet:

- Sediment = 5.8%
- Phosphorus = 2.1%

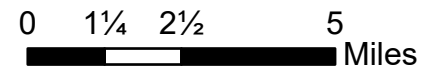
| BMP Treatment Group          | Number of Practices | Total 10-Year Cost (\$)* | Values at Catchment Outlet    |                         |                         | Values at Planning Region Outlet |                         |                         | Additional water storage (ac-ft) | Cumulative Surface area (acres) |
|------------------------------|---------------------|--------------------------|-------------------------------|-------------------------|-------------------------|----------------------------------|-------------------------|-------------------------|----------------------------------|---------------------------------|
|                              |                     |                          | Sediment Reduction (tons/yr.) | TP Reduction (lbs./yr.) | TN Reduction (lbs./yr.) | Sediment Reduction (tons/yr.)    | TP Reduction (lbs./yr.) | TN Reduction (lbs./yr.) |                                  |                                 |
| 638 - WASCOB                 | 46                  | \$496,800                | 1,690                         | 435                     | 5,720                   | 442                              | 299                     | 3,959                   | 97                               | 1,592                           |
| 390 - Riparian Buffer        | 14                  | \$247,647                | 313                           | 91                      | 1,916                   | 38                               | 50                      | 1,041                   | 0                                | 576                             |
| 410 - Grade Stabilization    | 124                 | \$496,000                | 1,434                         | 75                      | 1,299                   | 349                              | 50                      | 861                     | 0                                | 195                             |
| 340 – Cover Crops            | 26                  | \$160,535                | 2,616                         | 452                     | 9,133                   | 788                              | 319                     | 6,452                   | 0                                | 1,996                           |
| <b>Existing Load</b>         |                     |                          |                               |                         |                         |                                  |                         |                         |                                  |                                 |
| <b>Total Load Reduction</b>  |                     |                          | 6,053                         | 1,052                   | 18,069                  | 1,617                            | 717                     | 12,312                  | 97                               | 4,358                           |
| <b>Percent Reduction (%)</b> |                     |                          |                               |                         |                         |                                  |                         |                         |                                  |                                 |

\*costs are 10-year totals

# Sand Hill River Watershed: PTMApp Planning Region 1



- Planning Regions
- Practice Type (NRCS code)**
  - Cover Crops (340)
  - Riparian Buffer (390)
  - Grade Stabilization (410)
  - WASC0B (638)





## Sand Hills Planning Region

The Table below shows the 10-year PTMApp implementation scenario results for the **Sand Hills Planning Region**. The next page includes a map showing where practices are located.

### Scenario Reductions at outlet:

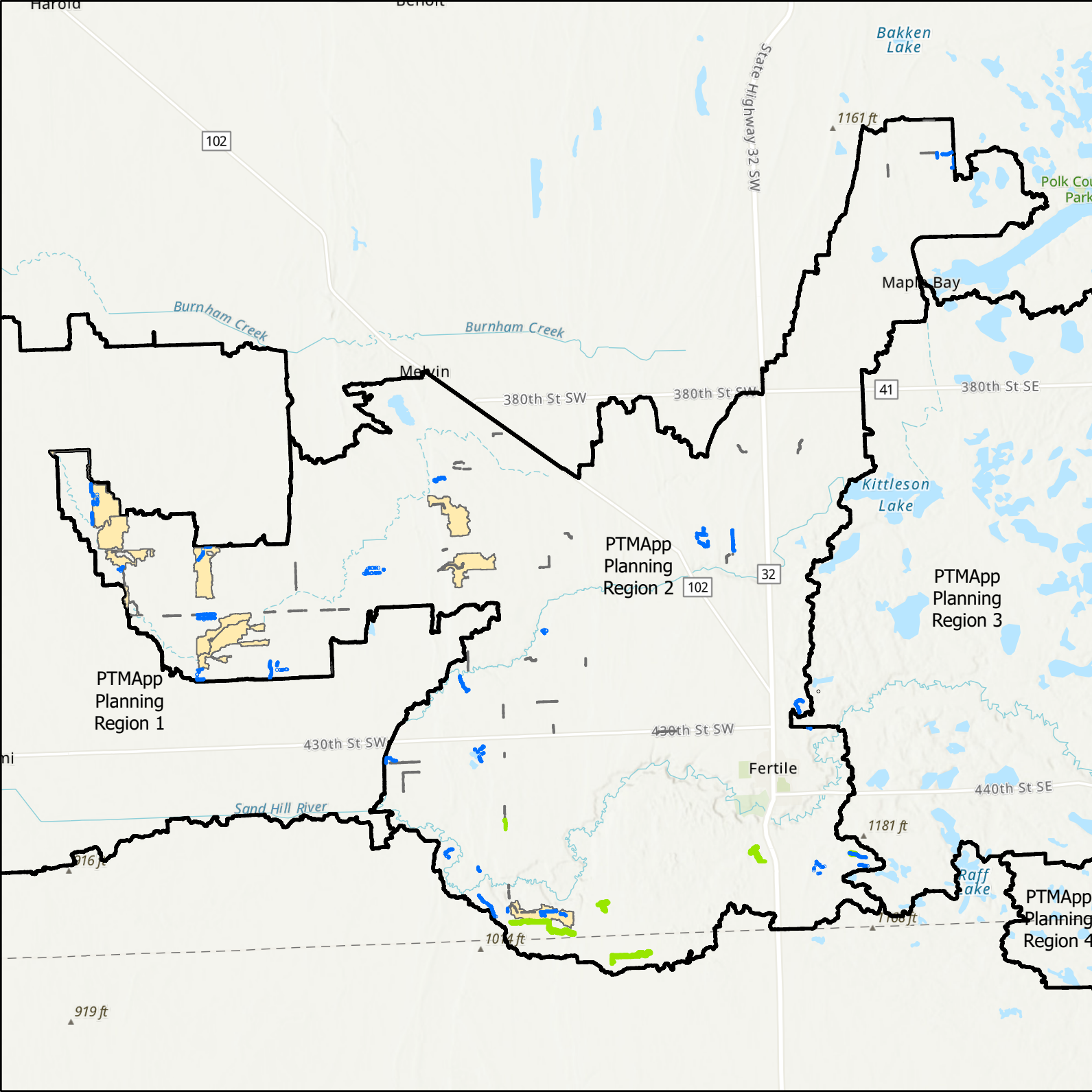
- Sediment = 10.7%
- Phosphorus = 2.4%

| BMP Treatment Group          | Number of Practices | Total 10-Year Cost (\$)* | Values at Catchment Outlet    |                         |                         | Values at Planning Region Outlet |                         |                         | Additional water storage (ac-ft) | Cumulative Surface area (acres) |
|------------------------------|---------------------|--------------------------|-------------------------------|-------------------------|-------------------------|----------------------------------|-------------------------|-------------------------|----------------------------------|---------------------------------|
|                              |                     |                          | Sediment Reduction (tons/yr.) | TP Reduction (lbs./yr.) | TN Reduction (lbs./yr.) | Sediment Reduction (tons/yr.)    | TP Reduction (lbs./yr.) | TN Reduction (lbs./yr.) |                                  |                                 |
| 638 - WASC0B                 | 28                  | \$302,400                | 680                           | 248                     | 3,391                   | 325                              | 165                     | 2,261                   | 57                               | 925                             |
| 390 - Riparian Buffer        | 6                   | \$152,075                | 231                           | 86                      | 1,609                   | 66                               | 38                      | 803                     | 0                                | 529                             |
| 410 - Grade Stabilization    | 40                  | \$160,000                | 302                           | 24                      | 450                     | 169                              | 20                      | 364                     | 0                                | 67                              |
| 340 – Cover Crops            | 9                   | \$79,779                 | 679                           | 224                     | 4,539                   | 449                              | 197                     | 3,989                   | 0                                | 992                             |
| <b>Existing Load</b>         |                     | <b>\$694,254.00</b>      |                               |                         |                         |                                  |                         |                         |                                  |                                 |
| <b>Total Load Reduction</b>  |                     |                          | 1,892                         | 583                     | 9,988                   | 1,010                            | 420                     | 7,417                   | 57                               | 2,513                           |
| <b>Percent Reduction (%)</b> |                     |                          |                               |                         |                         |                                  |                         |                         |                                  |                                 |

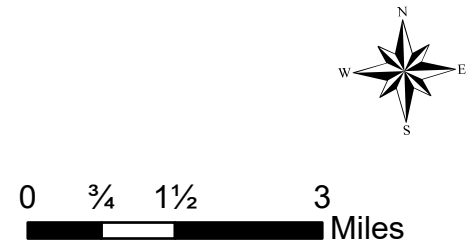
\*costs are 10-year totals



# Sand Hill River Watershed: PTMApp Planning Region 2



- Planning Regions
- Practice Type (NRCS code)
  - Cover Crops (340)
  - Riparian Buffer (390)
  - Grade Stabilization (410)
  - WASC OB (638)



## Lakes Planning Region

The Table below shows the 10-year PTMApp implementation scenario results for the **Lakes Planning Region**. The next page includes a map showing where practices are located.

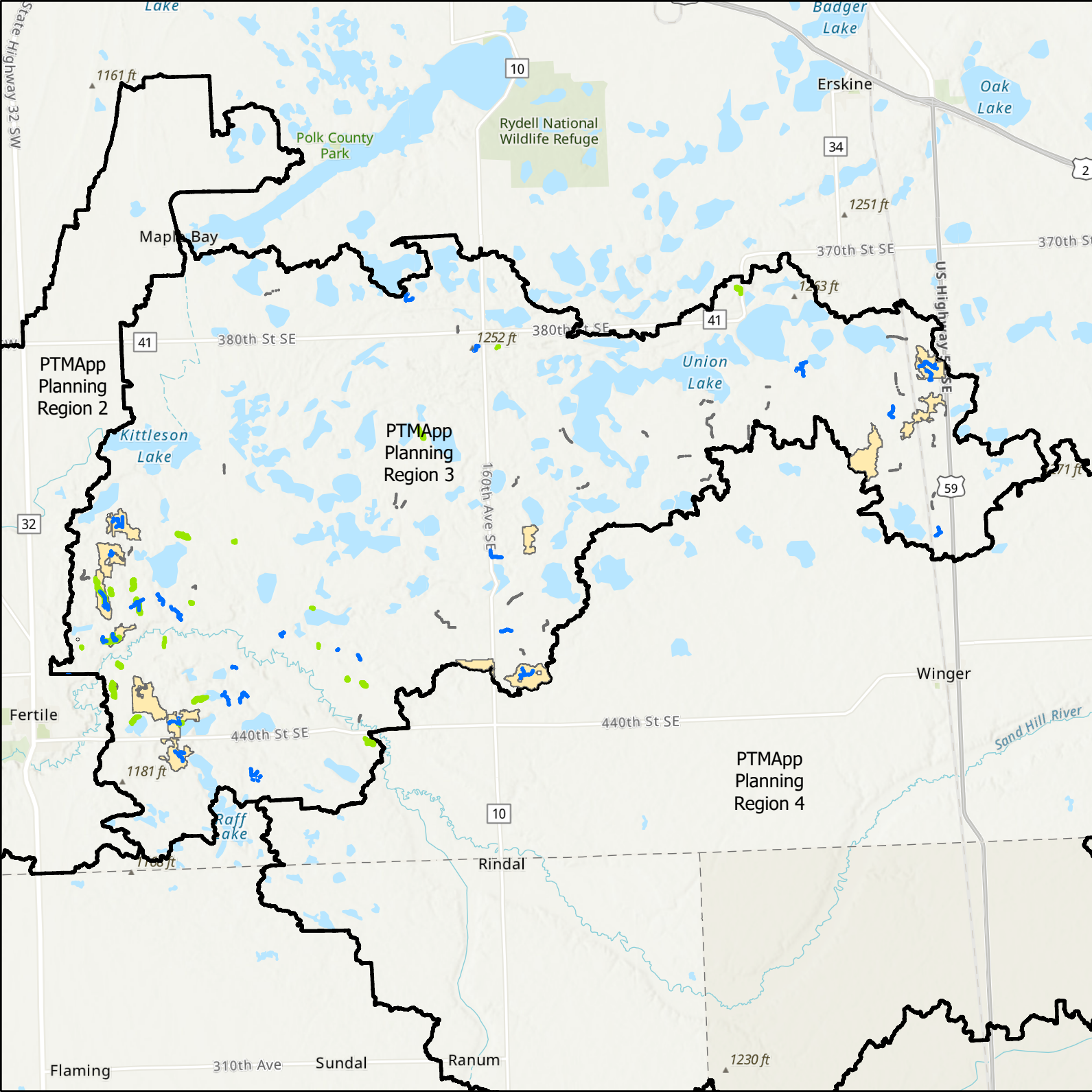
### Scenario Reductions at outlet:

- Sediment = 8.8%
- Phosphorus = 4.9%

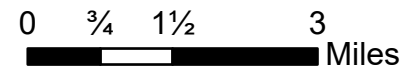
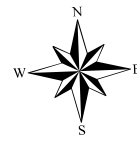
| BMP Treatment Group          | Number of Practices | Total 10-Year Cost (\$)* | Values at Catchment Outlet    |                         |                         | Values at Planning Region Outlet |                         |                         | Additional water storage (ac-ft) | Cumulative Surface area (acres) |
|------------------------------|---------------------|--------------------------|-------------------------------|-------------------------|-------------------------|----------------------------------|-------------------------|-------------------------|----------------------------------|---------------------------------|
|                              |                     |                          | Sediment Reduction (tons/yr.) | TP Reduction (lbs./yr.) | TN Reduction (lbs./yr.) | Sediment Reduction (tons/yr.)    | TP Reduction (lbs./yr.) | TN Reduction (lbs./yr.) |                                  |                                 |
| 638 - WASC0B                 | 27                  | \$291,600                | 1,078                         | 231                     | 3,240                   | 76                               | 34                      | 499                     | 75                               | 933                             |
| 390 - Riparian Buffer        | 24                  | \$185,912                | 609                           | 148                     | 2,929                   | 63                               | 26                      | 496                     | 0                                | 897                             |
| 410 - Grade Stabilization    | 35                  | \$140,000                | 199                           | 19                      | 364                     | 20                               | 4                       | 79                      | 0                                | 54                              |
| 340 – Cover Crops            | 13                  | \$80,296                 | 1,055                         | 225                     | 4,558                   | 59                               | 31                      | 658                     | 0                                | 998                             |
| <b>Existing Load</b>         |                     | <b>\$697,808.00</b>      |                               |                         |                         |                                  |                         |                         |                                  |                                 |
| <b>Total Load Reduction</b>  |                     |                          | 2,941                         | 624                     | 11,092                  | 217                              | 95                      | 1,732                   | 75                               | 2,882                           |
| <b>Percent Reduction (%)</b> |                     |                          |                               |                         |                         |                                  |                         |                         |                                  |                                 |

\*costs are 10-year totals

# Sand Hill River Watershed: PTMApp Planning Region 3



- Planning Regions
- Practice Type (NRCS code)**
  - Cover Crops (340)
  - Riparian Buffer (390)
  - Grade Stabilization (410)
  - WASC0B (638)



## Headwaters Planning Region

The Table below shows the 10-year PTMAApp implementation scenario results for the **Headwaters Planning Region**. The next page includes a map showing where practices are located.

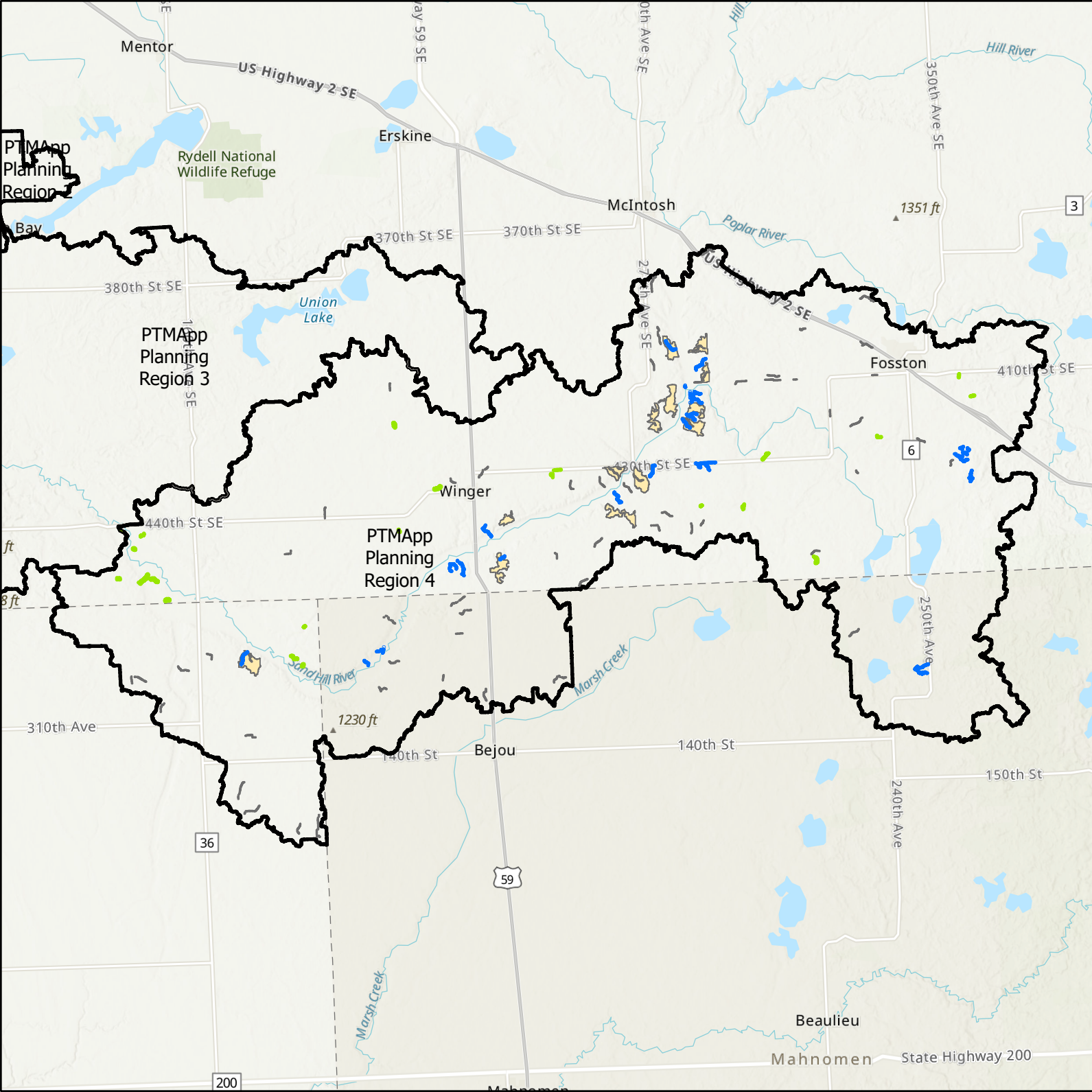
### Scenario Reductions at outlet:


- Sediment = 3.9%
- Phosphorus = 1.8%

| BMP Treatment Group          | Number of Practices | Total 10-Year Cost (\$)* | Values at Catchment Outlet    |                         |                         | Values at Planning Region Outlet |                         |                         | Additional water storage (ac-ft) | Cumulative Surface area (acres) |
|------------------------------|---------------------|--------------------------|-------------------------------|-------------------------|-------------------------|----------------------------------|-------------------------|-------------------------|----------------------------------|---------------------------------|
|                              |                     |                          | Sediment Reduction (tons/yr.) | TP Reduction (lbs./yr.) | TN Reduction (lbs./yr.) | Sediment Reduction (tons/yr.)    | TP Reduction (lbs./yr.) | TN Reduction (lbs./yr.) |                                  |                                 |
| 638 - WASCOB                 | 23                  | \$248,400                | 1,672                         | 210                     | 3,114                   | 136                              | 91                      | 1,377                   | 85                               | 811                             |
| 390 - Riparian Buffer        | 21                  | \$121,203                | 333                           | 87                      | 1,683                   | 84                               | 48                      | 950                     | 0                                | 494                             |
| 410 - Grade Stabilization    | 62                  | \$248,000                | 856                           | 52                      | 1,038                   | 120                              | 27                      | 543                     | 0                                | 151                             |
| 340 – Cover Crops            | 13                  | \$78,707                 | 1,963                         | 222                     | 4,485                   | 178                              | 116                     | 2,341                   | 0                                | 978                             |
| <b>Existing Load</b>         |                     | <b>\$696,310.00</b>      |                               |                         |                         |                                  |                         |                         |                                  |                                 |
| <b>Total Load Reduction</b>  |                     |                          | <b>4,824</b>                  | <b>571</b>              | <b>10,320</b>           | <b>519</b>                       | <b>282</b>              | <b>5,210</b>            | <b>85</b>                        | <b>2,434</b>                    |
| <b>Percent Reduction (%)</b> |                     |                          |                               |                         |                         |                                  |                         |                         |                                  |                                 |

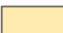


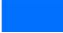
\*costs are 10-year totals

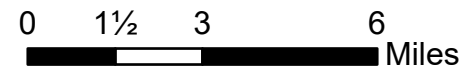
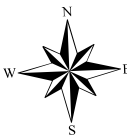
# Sand Hill River Watershed: PTMApp Planning Region 4



 Planning Regions

**Practice Type (NRCS code)**

-  Cover Crops (340)
-  Riparian Buffer (390)
-  Grade Stabilization (410)
-  WASC0B (638)



**APPENDIX D. SAND HILL RIVER WATERSHED DISTRICT RULES**

***SAND HILL RIVER  
WATERSHED DISTRICT***

***RULES AND GUIDANCE DOCUMENT***

**Amended Rules**



**ATTEST:**

**Stuart Christian, Chairman  
Adopted February 14, 2019**

A handwritten signature in dark ink, appearing to read "Stuart Christian", is written over a solid horizontal line.

**SAND HILL RIVER WATERSHED DISTRICT**

**DISTRICT RULES  
AND GUIDANCE DOCUMENT**

**TABLE OF CONTENTS**

1. **Permitting Procedures, Fees and Financial Assurances - District Rule.....3**

2. **Permitting Procedures, Fees and Financial Assurances - Guidance.....7**

3. **Surface Drainage and Flood Mitigation – District Rule .....12**

4. **Surface Drainage and Flood Mitigation – Guidance.....16**

5. **Subsurface Tile Drainage – District Rule .....21**

6. **Enforcement – District Rule .....22**

7. **Enforcement – Guidance.....23**

8. **Buffer Law Implementation.....28**

**FOR QUESTIONS, COMMENTS, OR FURTHER INFORMATION:  
Sand Hill River Watershed District  
218-945-3204**

**SAND HILL RIVER WATERSHED DISTRICT  
DISTRICT RULES**

**PERMITTING PROCEDURES, FEES AND  
FINANCIAL ASSURANCES RULE**

**Adopted February 14, 2019  
Effective February 14, 2019**

1. **POLICY.** The District permit requirement is not intended to delay or inhibit development. Rather permits are needed so that the managers are kept informed of planned projects, can advise and in some cases provide assistance, and can ensure that land disturbing activity and development occurs in an orderly manner and in accordance with the overall plan for the District. All interpretations of these rules and permit decisions under these rules will incorporate and be consistent with District purposes set forth in Minnesota Statutes section 103D.201.
2. **PERMIT REQUIREMENT.** Any person or agency of the State of Minnesota or political subdivision undertaking an activity for which a permit is required by the District rules must first submit a permit application. The application must be submitted on the form provided by the District or the substantial equivalent, and must include all exhibits required by the applicable District rule(s). Application forms are available on the District web site at: [www.sandhillwatershed.org](http://www.sandhillwatershed.org).
  - A. All permit applications must bear the original signature of the landowner.
  - B. No land-disturbing activity to which a District permit requirement applies may be commenced prior to receiving authority from board of managers of the District. Authority for permit approval is delegated to its administrator or staff.
  - C. Permit decisions will be made by the Board of Managers, except as may be delegated by the Board of Managers to staff or the District administrator by written resolution. If a permit is approved by staff or administrator, the permit will still require approval from the Board before being issued. The Board will review a staff or administrator permit decision. The district may approve or deny an application and may impose reasonable conditions on approval. Conditions may include (consistent with the rules) requirements for financial assurances and maintenance agreements or declarations, and may require that these documents be properly executed or recorded before permit issuance.
  - D. A permit is valid for one year from the date the permit is approved, with or without conditions, unless specified otherwise or the permit is suspended or revoked.
  - E. To request an extension or transfer of a permit, the permittee must notify the District in writing prior to the permit expiration date and provide an explanation for the extension or transfer request by filling out the extension/transfer request form. The District may impose different or additional conditions on an extension or deny the extension in the event of a material change in circumstances, except that on the first extension, a permit will not be subject to additional or different requirements solely because of a change in District rules. New or revised rule requirements will not be imposed on an extension of a permit where the permittee has made substantial progress toward completion of the permitted work. If the activities subject to the permit have not substantially commenced,



no more than one extension may be granted. An applicant wishing to continue to pursue a project for which permit approval has expired must reapply for a permit from the District and pay applicable fees.

- F. A permittee may transfer a permit to another party only upon approval of the District, which will be granted if:
- 1) the proposed transferee agrees in writing to assume responsibility for compliance with all terms, conditions and obligations of the permit as issued;
  - 2) there are no pending violations of the permit or conditions of approval; and
  - 3) the proposed transferee has provided any required financial assurance necessary to secure performance of the permit.

The District may impose different or additional conditions on the transfer of a permit or deny the transfer if it finds that the proposed transferee has not demonstrated the ability to perform the work under the terms of the permit as issued. Permit transfer does not extend the permit term. The District may suspend or revoke a permit issued under these rules wherever the permit is issued on the basis of incorrect information supplied to the District by the applicant,

- G. A permit applicant consents to entry and inspection of the subject property by the District and its authorized agents at reasonable times as necessary to evaluate the permit application or determine compliance with the requirements of a District permit or rule(s).
- H. A District permit is permissive. Obtaining a permit from the District does not relieve the applicant from responsibility to comply with any procedures or approvals that may be required by Minnesota Statutes chapter 103E or any other ditch law, nor does it relieve the applicant from responsibility for obtaining authorizations require, if any, by other regulatory bodies.

### 3. RECONSIDERATION.

- A. Before a permit decision is final for the purpose of appeal under Minnesota Statutes §103D.537, an applicant must request that the Board of Managers reconsider its decision. The applicant may submit a notice of reconsideration on a form provided by the District that includes concurrence in an extension of the time for District permit action under Minnesota Statutes §15.99. The notice must be submitted within 10 days of the permit decision and at least one day before the date by which a permit decision must be rendered under §15.99. Within 10 days of submitting the notice, the applicant must in writing enumerate for the District the specific findings or conditions for which reconsideration is requested, along with any additional submittals or argument supporting applicant's request.
- B. The District will give the applicant due notice of when the Board of Managers will reconsider the permit decision. The Board of Managers will adopt findings on reconsideration. The District will not take longer than 120 days to issue a final decision including reconsideration, unless a further extension is approved by the applicant.
- C. The permit decision is final if an applicant fails to timely file notice under paragraph 3.A,

if the applicant otherwise waives the right of reconsideration, or if the Board of Managers is unable to reconsider the permit decision before the expiration of the District's time for review under §15.99. Otherwise, the Board of Managers' decision on reconsideration is the final decision.

- D. District costs incurred for reconsideration are permit administration costs for which an applicant may be responsible under Section 4 of this rule.
4. PERMIT FEES: The District may charge applicants a permit fee in accordance with state law and a schedule maintained by the Board of Managers to ensure that permit fees cover the District's actual costs of administrating and enforcing permits. Fees also will cover actual costs related to field inspections of permitted projects, such as investigation of the area affected by the proposed activity, analysis of the proposed activity, service of consultants and any required monitoring of the proposed activity. Costs of monitoring an activity authorized by permit may be charged and collected as necessary after issuance of the permit. The fee schedule may be obtained from the District office or the district web-site at [www.sandhillwatershed.org](http://www.sandhillwatershed.org). A permit applicant must submit the required permit fee to the District at the time it submits the relevant permit application, if fees are applicable. The fee provided for in this rule will not be charged to any agency of the United States or of any governmental unit or political subdivision of the United States of Minnesota.
  5. AFTER THE FACT" PERMIT. An "After The Fact" permit may be considered by the District and granted to an individual, if the "After The Fact" permit submission is the first submission provided to the District by said person or entity for the work that has been done. If a person or entity has had a prior written warning given to them in regard to their failure to follow the permitting rule requirements, a \$500.00 late filing fee shall be assessed against said person or entity for the "After The Fact" permit submission. Said late filing fee assessment is in addition to any other conditions or requirements that may ordered by the District in regard to repair or restoration of non-permitted work by said persons or entity in regard to an approval or disapproval of an "After The Fact" permit application. In addition to the remedies provided in Minnesota Statute 103D.545 and other remedies provided for in these rules, in those instances where work has been performed before a permit has been approved, the District may require that the property be returned to its original condition before consideration of the "After The Fact" permit application. The District may also require the applicant to pay actual engineering and attorney's fees, allowed by law, incurred by the District in dealing with the un-permitted work.
  6. FINANCIAL ASSURANCE. The managers, at their discretion, may require an applicant to file a bond, letter of credit or other escrow deposit in a form approved by the District as a condition of permit issuance. The amount of the financial assurance required will be set in accordance with a schedule established and maintained the Board of Managers by resolution. When the permitted activities are certified as having been completed in compliance with the District permit and rules, the financial assurance will be released.
    - A. If the District determines that the permitted activities have not been completed in compliance with the permit and District rules, the Board of Managers may determine that the assurance is forfeited and the District may use the funds to take such actions the District deems necessary to bring the subject property into compliance with the permit and District rules, to prevent or mitigate harm to protected resources or other property, to abate or restore damages, or otherwise to ensure conditions in compliance with an applicable District permit and/or the District rules. If financial assurance funds prove insufficient to complete necessary work, the District may complete the work and assess

the permit holder and/or property owner for any excess costs.

- B. No financial assurance will be required of any agency of the United States or of any governmental unit or political subdivision of the State of Minnesota. The District may require that the District be named as a beneficiary in the financial assurance of the agency's contractor.

## PERMITTING PROCEDURES, FEES AND FINANCIAL ASSURANCES

### Guidance to District Rule

The Permitting Procedures, Fees and Financial Assurances District Rule sets forth the basic process for property owners to apply for watershed district permits and for district processing of applications. These procedures are intended to assure that the District's process is fair, thorough, and effective.

#### A. Policy

The policy statement at section 1 of the rule states that the District's regulatory program is intended to balance two interests. First, the District has an interest, and indeed a statutory mandate - Minnesota Statutes §103D.341 - to reasonably regulate and monitor activities within its boundaries that may affect water resources. Second, it wishes to do so without unnecessary burdens on those who wish to make use of their property responsibly. A District and its staff will keep both of these interests in mind in carrying out its regulatory program.

#### B. Application Submittal

Key elements of the rule for application submittal, at section 2, are as follows:

- The rule states explicitly that activity subject to District rules may not occur until a permit has been applied for and issued or authority given by the District to proceed.
- The landowner must sign the application form. The applicant and permittee should always be the party who is indicated in the county land records as the owner of the property on which the activity is to occur. If another party as delegated by the landowner (such as a contractor, relative, renter, or intended property buyer) is the District's contact, it should be identified as the agent for the landowner and the District should document its authority to represent the landowner. This insures: (a) that any activity pursuant to a District permit occurs with the knowledge of the landowner and (b) that if compliance action is necessary, the District or the contractor will have access to the property.
- The application must be made on a form supplied by the District. State law (Minnesota Statute §15.99) stipulates that once an application is submitted, the District must approve or deny the completed application within a specified time frame (60 days) from the date of receipt in the district office or else the permit is deemed granted. Therefore it is important that an application be clearly identified as an application, and not, for example, merely a pre-application inquiry. The time limit in Minnesota Statute §15.99 begins upon the District's receipt of a written request containing all information required by law or by a previously adopted rule, ordinance, or policy of the District. If the District receives a written request that does not contain all required information, the 60-day limit starts over only if the District sends written notice within 15 business days of receipt of the request telling the requester what information is missing. Additional information associated with an incomplete application is available for review per Minn. Stat. §15.99.
- When a landowner submits an application, it operates as a grant of permission for the District to enter the property. Entry typically will be needed for the District to evaluate the permit application and, once a permit is issued, to monitor activity for permit compliance. The watershed

law (Minnesota Statutes §103D.335, subdivision 14) already authorizes the District to enter lands “to make surveys and investigations to accomplish the purposes of the watershed district.” This appears to give the District adequate legal authority to enter private property, outside of constitutionally protected areas such as those in or adjacent to homesteads. The rule language is consistent with this authority.

- A permit may be approved subject to certain conditions that must be fulfilled before the permit is valid. (While other conditions may apply to the manner in which the work itself is conducted after a permit is issued). The District rule states that a permit extends for one year after permit approval and/or issuance. To state it another way, all activity on the land that is subject to the permit (not including subsequent ongoing maintenance) must be completed within a year. This means that it is the permittee’s burden to, as soon as possible, meet any conditions that must be fulfilled before permit issuance. This prevents the situation wherein an approved permit is indefinitely open because the permittee has never fulfilled such pre-conditions and the permit has never actually issued.

### **C. Permit Extension and Transfer**

However, because it may take time for pre-issuance conditions to be met, and because even without such conditions a project may take more than a year to complete, the District rules include a process for a permit to be extended. An applicant must request extension before the permit has expired. An extension presents a situation where there is a need for balancing of interests as described earlier. On the one hand, once a District has evaluated an application and determined that proposed work can be done in compliance with the District’s rules, a landowner should be able to complete the work without unexpected new costs or barriers. On the other hand, the District does not want land in a disturbed state indefinitely and, as an administrative matter, does not want a permit open indefinitely. Further, because the District’s rules may evolve over time to reflect new knowledge and policies, the District has an interest in limiting the extent to which future land disturbance is “grandfathered” under old rules and does not have to meet new standards.

The model permit extension terms balance these considerations as follows:

- A permit may be extended for an indefinite number of years, at the District’s discretion, provided the work has been “substantially commenced.” However, if the work has not been substantially commenced by the end of the second permit year (two years), it may not be extended and the landowner will need to make a new application.
- The District may deny or place new conditions on an extended permit for a “material change in circumstances.” This allows the District to ensure that the permit continues to protect water resources if there is new knowledge or information relevant to the work since the permit was approved or last extended. The term “material” is intended to give some protection to the landowner, and means that the District will not change the “rules of the game” unless the change is both significant and relevant.
- Further, on the first extension, a change in the District’s rules occurring since permit approval will not count as a “material” change. This insulates a permittee from a change in the rules for a two-year period of time after a permit is approved. If a permittee seeks a second extension and the District rules have changed in the interim, the District may apply new conditions as needed for the work to conform to the new rules.

- However, once the permittee has made “substantial progress” on the work, a request for permit extension will not be subject to a rule change occurring since permit approval or the prior extension.

Similarly, the District rule allows for a permittee to transfer the permit to a third party. It is advised that the permit always “runs with the land,” so the typical reason for a permit to be transferred is because the property is being conveyed. The general principle that the rule reflects is that permit transfer should not be burdened. However, the rule conditions this principle on the following:

- The transferee, in writing, must assume all permit obligations. This avoids the situation where a permittee is excused from permit obligations and ceases to have authority over the land, but the new landowner disclaims knowledge of the permit responsibilities.
- At the time of permit transfer, the work must comply with the permit. First, it is important to document that the site was in compliance when a permit transferee assumes compliance responsibility. This precludes the transferee’s later claim that the site was non-compliant on the earlier permittee’s watch, and that the transferee was unaware of or should not be responsible for it. Also, practically speaking, property transfer is an effective moment to require that site condition be corrected, as it will be made a condition of sale.
- If the District holds a financial assurance, it will need a substitute assurance from the permit transferee and will return the existing one to the transferor permittee.

Finally, the District rule allows the District to deny or impose conditions on a permit transfer if it has doubts about the proposed transferee that are relevant to whether the transferee can perform the work in compliance with the permit. This clause probably won’t apply very often, but gives the District the ability to exercise its judgment if certain work is sensitive or the proposed transferee has been shown to be irresponsible in the past. The District will have to decide what is sufficient evidence to support special conditions in this circumstance.

#### **D. Reconsideration**

At section 3, the District rule includes a process for an applicant to ask the board of managers to reconsider a District permit decision. This reconsideration is intended as a requirement before the applicant may appeal the decision to a court under Minnesota Statutes §103D.537.

If an applicant challenges a permit action, the District will always be in the strongest position to defend its decision if there are detailed findings to support a permit denial, or to support conditions included in a permit approval. The United States Supreme Court underscored this point in its decision in *Koontz v St. Johns River Water Management District*, U.S. No. 11-1447; 570 U.S. (2013). The Court held that land-use agencies imposing conditions on the issuance of development permits must have a rational relationship and rough proportionality with the impacts of the proposed development.

Because most permit actions are not contested, it doesn’t make sense for every such action to rest on extensive staff or consultant work and detailed findings. The reconsideration process is intended to allow for the District to devote the resources to such efforts only as to those aspects of a permit that are in fact contested. The District rule requires an applicant to give a District fair notice of its objection to the denial or conditions, and ensures that the applicant has a full opportunity to address the board of managers in that regard. The District rule also provides that a District may recover its additional permit review costs incurred in the reconsideration process.

This process must be carefully managed so that the District does not violate Minnesota Statutes §15.99, which as noted places a strict deadline on a District's final permit decision. The District rule states that if the reconsideration process cannot be completed within the section 15.99 (120 days) time frame, then the applicant is not required to complete the reconsideration step before exercising its appeal right. It is especially important for Districts to manage the permit process so that decisions are timely within these deadlines, and adequate time is anticipated for reconsideration of contentious permit conditions.

### **E. Permit Fee**

Minnesota Statutes §103D.345, subdivision 2, states that a watershed district may require a permit fee that covers the actual cost for the District to process a permit application and then to monitor compliance with the issued permit. This includes staff and consultant costs (including attorney costs, as allowed by law) and related administrative costs. At section 4, the rule basically incorporates the statutory language. However if all rules are followed by the applicant while applying for a District permit, all fees can be waived and there may be no charge for the permit.

### **F. Financial Assurance**

Section 6 of the district rule incorporates the Minnesota Statutes §103D.345, subdivision 4, authority given to watershed districts to require that a permittee give a bond to ensure its performance under the permit. The District rule uses the term "financial assurance" rather than "bond" to allow a permittee to use other means of assurance including letters of credit and cash escrows. As is recommended for the permit fee, the required amount of financial assurance for a particular type and scale of project would be set in a schedule that could be reviewed and adjusted by the board of managers as needed, without a formal rulemaking.

The rule further sets forth fairly straightforward terms for how the assurance will be used by the District, the enforcement costs that the assurance may be used to fund, and the release and return of unused funds once the work is completed in accordance with the permit terms. The rule explicitly states that if District costs exceed the amount of a financial assurance, the permittee will be responsible to reimburse for those excess costs. The District would have to pursue such a claim by an independent legal action, if necessary.

The rule provides that a financial assurance will not be required if the permittee is a federal, state or local unit of government. The watershed law does not specifically exempt governmental agencies from the District's authority to require a financial assurance. However, the practice of watershed districts generally is not to impose such a requirement. It is reasoned that public permittees, in general, are more reliable in meeting permit requirements and that where a particular permittee is not, it remains accessible and is not going to disappear or go into bankruptcy. Further, the cost of a bond or letter of credit would just be an additional taxpayer cost. Notwithstanding, the rule states that if the public permittee requires a bond of its contractor, the District is to be named a beneficiary. The reasoning here is that this gives protection to the District without measurable added cost.

### **G. Permit Approval Authority**

Finally, section 2 of the District rule states that the board of managers will decide permits, except as may be delegated to the administrator or staff. A district board of managers may be quite comfortable delegating the authority for permit decisions to its administrator or staff for simpler permits or those likely to be less controversial. Allowing the administrator or staff to approve certain permits reduces the time and cost for applicants and frees the board of managers agenda for other matters. The delegation would occur by a board resolution that defines the limits of the delegation.

With the reconsideration process at section 3, if a permittee objects to a permit decision of the administrator or staff, it will come before the board for review. A district can include other procedures in its rules, or in the delegation resolution, that would, for example, allow a board member or an interested member of the public other than the applicant to ask that the board consider an application in a given instance.



**SAND HILL RIVER WATERSHED DISTRICT  
RULES AND REGULATIONS**

**SURFACE DRAINAGE AND FLOOD MITIGATION**

**Adopted November 1, 2018  
Effective February 14, 2019**

**DEFINITIONS**

**Board of Managers** shall mean Board of Managers of the Sand Hill River Watershed District

**Debris:** Scattered pieces of waste or remains. Examples could include, but not limited to, corn stalks, hay bales, beet pilings or anything can obstruct the flow of water.

**District** shall mean the Sand Hill River Watershed District

**Dike** shall mean a bank or mound of earth, berm or obstruction that is built or placed in a manner which will affect the flow of water and especially to protect an area from flooding.

**Drainage Way** shall mean a natural or artificial channel which provides a course for the flow of water, whether that flow be continuous or intermittent.

**100- year Floodplain** means the area within and adjacent to a watercourse or water basin, as those terms are defined in Minnesota Statutes chapter 103G, that is inundated during the 24-hour precipitation event with the recurrence interval of 100 years.

**Flood Mitigation** shall mean managing and control of flood water movement, such as redirecting flood run-off through the use of floodwalls and flood gates, rather than trying to prevent floods altogether.

**Improve** has the meaning set forth at Minnesota Statutes §103E.215, subdivision 2, which states that improvement means tiling, enlarging, extending, straightening, or deepening of an established and constructed drainage system.

**Managers** shall means the Sand Hill River Watershed District Board of Managers

**Private Drainage Way** shall mean a drainage way other than a public drainage way, which includes but is not limited to private tile drainage and surface drainage systems constructed along roadways.

**Public or Legal Drainage Way** shall mean a drainage way under the jurisdiction of the drainage authority pursuant to Minnesota Statutes chapter 103E.

**Surface Drainage** shall mean removal of surface water by development of the slope of the land utilizing systems of drains to carry away the surplus water.

**Tile Drainage** shall mean an agriculture practice that removes excess water from soil subsurface.

1. POLICY. It is the policy of the Board of Managers to promote the use of the waters and related resources within the District in a provident and orderly manner to improve the general welfare and public health for the benefit of the District's present and future residents. Further, it is the policy of the Board of Managers to regulate new construction, improvement, repair and maintenance of legal, public and private drainage ways for the following purposes:

- A. To preserve the capacities of drainage systems to accommodate future needs.
- B. To improve water quality and minimize localized flooding.
- C. To minimize the loss of drainage capacity.
- D. To avoid drainage conditions that cause or aggravate erosion or sedimentation of downstream drainage ways or waterbodies.
- E. To ensure that parties responsible for accumulation of debris, soil and sediment in drainage ways maintain those drainage ways. Additionally, the district refers to obstructions that are defined under Minnesota Statutes 103E.075 and implements this statute relating to obstructions.

2. REGULATION

- A. A permit must be obtained from the District before undertaking any of the following:
  - i. Excavation of a new private drainage way;
  - ii. Work below the top of bank of an existing public, legal or private drainage way located within any public right of way that disturbs soil or alters the dimensions or hydraulic profile of the channel;
  - iii. Altering surface flow or topography, including by tiling or installing a tile inlet or outlet structure, in a manner that increases the rate of flow to a legal, public or private drainage way;
  - iv. Constructing, installing or altering a road or utility crossing beneath or over a public or legal drainage way; or
  - v. Constructing, altering or removing a dike which alters the flow of water.
- B. Section A notwithstanding, no permit from the District is required:
  - i. To perform maintenance on an existing drainage way or field drain, so long as the work does not remove clay or virgin soils or alter the original alignment, depth or cross-section of the drainage way;
  - ii. To repair or replace tile drainage to the same size of tile as previously existed, up to 50 lineal feet within a private drainage way without altering the system invert;
  - iii. To perform emergency work on any public or private drainage way to avoid substantial property damage due to flooding, subsidence or other cause, in which case the District must be notified of the work and the reasons for the emergency action, as soon as possible. If at all possible, efforts to notify the District should be made before performing any emergency work. Any emergency work performed without the District's and governmental roadway authority's permission is performed at the owners own risk.
  - iv. To disturb surface soils in the course of ordinary cultivation or other agricultural activity.
- C. The requirements of this rule are in addition to other applicable laws and procedures,

including those of Minnesota Statutes chapter 103E. This rule is to provide for management of waters in the public interest and does not displace in whole or part any private legal rights a property owner or other person may have with respect to the use and drainage of waters.

- D. A contractor or equipment operator is responsible to ascertain whether a permit is required by this rule and, if so, that it has been obtained.
3. SURFACE DRAINAGE. The following criteria apply to applications under this rule other than those for the construction, alteration or removal of a dike:
- A. An applicant may use his land reasonably in disposing of surface water and may collect the natural surface drainage into a drainage way.
  - B. An applicant may not dispose of or alter the flow of surface water so as to unreasonably burden another landowner with surface flow.
  - C. Surface water will not be artificially directed from upper land to and across lower land without adequate provision on the lower land for its passage.
  - D. Surface water will not be artificially directed into a legal drainage system from land not assessed to that system unless express authority from the drainage authority is obtained as defined under Minnesota Statutes 103E.401.
  - E. Temporary storage and retention basins on the parcel or parcels proposed to be drained will be used to the extent feasible for upstream storage and to maintain peak flows, prevent erosion and avoid increased demand on public drainage systems.
  - F. An applicant shall control erosion and downstream siltation by the following means:
    - i. All work involving exposed or stockpiled soil or materials subject to erosion will conform to an erosion and sediment control plan approved by the District.
    - ii. Open drainage ways will be stabilized with vegetation above the low water mark or other best management practices to reduce channel erosion.
    - iii. To reduce sediment transport, where feasible drainage will be discharged through marsh lands, swamps, retention basins or other treatment facilities prior to release into the receiving public water. Where feasible, a retention basin will overflow to a wide, shallow grassed waterway.
    - iv. Drainage ways will be constructed with side slopes designed in accordance with proper engineering practice to minimize erosion, giving due consideration to the intended capacity of the drainage way; its depth, width and elevation; and the character of the soils to be drained.
    - v. Water inlets, culvert openings and bridge approaches must have adequate shoulder and bank protection to minimize land and soil erosion.
    - vi. Channels and outfalls must be designed to be stable.
    - vii. Consideration for establishment of a grass filter strip 16.5 feet in width where possible and maintained on each side of a new drainage way and on each side of an existing drainage way which is subject to work for which a permit is required by this rule.
  - G. The proposed activity may not adversely affect downstream water quality or quantity.

4. DIKES. The following criteria apply to the construction, alteration or removal of a dike:
  - A. The dike may not unreasonably restrict flow onto down gradient property.
  - B. The dike may not be constructed or maintained within the 100-year floodplain unless plans and specifications, signed by a registered engineer, are submitted showing that:
    - i. The work will not impede 100-year flood flows outside of the delineated retention area, or raise the 100-year flood level or increase flood peak downstream;
    - ii. Overflow sections are designed to handle overtopping during major floods without significant erosion or risk of failure and without sandbagging or other manual measures before or during a flood; and
    - iii. The capacity of pumping facilities to remove surface water stored behind a dike is consistent with Minnesota Hydrology Guide criteria.
  - C. Operational procedures must prohibit pumping when the agricultural dike is overtopped during a rain or snow-melt event until downstream flood peaks have occurred.
  - D. Outlet drainage must be sized to the applicable capacity in the Minnesota Hydrology Guide (Curve 1) for agricultural drainages, or other technical specifications established by the District.
  - E. A permit to construct or maintain an agricultural dike will be conditioned on the applicant's granting the District the right in perpetuity to:
    - i. Enter onto property to assure landowner has installed and is maintaining traps/gates to restrict or eliminate outflow from the diked area during and after overtopping flood events; and
    - ii. Enter on the subject property to inspect traps/gates during and after an overtopping flood event.
5. EXHIBITS. The following exhibits may be requested to accompany the permit application. Two copies, (standard paper size of 8.5 inches by 11 inches), which include:
  - A. Map showing location of project and tributary area.
  - B. Plans and specifications for the project.
  - C. Existing and proposed cross sections and profile of affected area.
  - D. Description of bridges or culverts required.
  - E. List of owners of properties benefitted or affected by the proposed work.
  - F. Such other submittals as the District reasonably may require to evaluate whether the proposed activity meets the standards of this rule.

## **SURFACE DRAINAGE AND FLOOD MITIGATION**

### **Guidance to District Rule**

The Surface Drainage and Flood Mitigation district rule identifies the changes to surface water flows that will require a permit from the watershed district, and sets forth the standards it will apply in order to determine whether those changes are permitted. A watershed district's consideration of this district rule in particular will benefit from the district engineer's advice to assure that critical water management concerns in the local watershed are addressed.

#### **A. Policy**

The policy statement at section 1 serves several purposes. First, it communicates to property owners why the watershed district is choosing to regulate surface drainage and assists those owners in designing their proposed surface drainage alterations in a way that will be consistent with district goals. Second, when the board of managers must exercise judgment during permitting decisions, it will refer to the policy statement in order to align its decisions with the stated policies. Third, in the event of a legal challenge to a permit decision, the underlying policies of the rule will guide the judge. If the permit decision aligns with those policies, the judge will give greater deference to the board's decision and the district's legal position will be stronger.

The proposed policies reflect the following goals for surface drainage management:

- To preserve capacity in public drainage systems into which lands assessed benefits for those systems discharge. Note that the drainage law (Minnesota Statutes chapter 103E) does not control the volume that may flow from assessed benefited lands into the system or the rate of that flow. However, a watershed district under its regulatory authority (Minnesota Statutes chapter 103D) may regulate both volume and peak flow off of lands benefited into a drainage system to provide drainage benefits equitably to all lands paying into the system.
- To limit the movement of soils into channels and preserve the integrity of channel banks, in order to limit maintenance costs for public ditch systems and limit the transport of sediment, nutrients and other pollutants to downstream receiving waters.
- To protect the structural integrity of public drainage systems from destabilizing hydraulic forces.
- To prevent unassessed benefited lands from draining into public or private drainageway systems, in order to preserve system capacity for those property owners bearing the cost of those systems, and in the interest of equity.

#### **B. Regulation**

The regulation section identifies proposed changes to the landscape that require a permit from the watershed district. The separation between those activities that require a permit from those that don't is made with reference to the four policies identified in the preceding section. What this section does is identify those activities that, if not done properly, can cause impacts to public drainage systems and downstream waters that, as the policies spell out, the watershed district is trying to prevent. The goal is to exercise watershed district oversight of those activities while, to the extent possible, avoiding imposing permitting burdens on other activities that don't pose a substantial risk of impact.

In addition, this section strives to define activities that require permits, and those that don't, as precisely as possible. Ambiguity in knowing what does and does not require a permit is a burden on property owners and can be a source of legal conflict. This doesn't mean that all ambiguity can be eliminated, but where possible it should be minimized.

The District rule first describes the activities that require a permit, and then carves out from those descriptions certain exemptions. The District rule sets forth specific descriptions of activities that require a permit. In summary, they include:

- Any change that affects surface flows into or within a surface channel. This includes excavating a channel (whether or not there is an outlet); grading land or installing tile, if it increases flow to a downgradient surface system; Installing a tile inlet; diking and expanding the capacity of a drainage outlet.
- Any work in or over a public surface drainage system or within any right of way of a governmental roadway.

The following activities that otherwise would meet one of these criteria are exempted from the permit requirement:

- Ordinary maintenance of a private drainage way (no change to legal alignment, depth or cross-section)
- Replacing up to 50 lineal feet of tile
- Emergency work on a non-public drainageway or channel necessary to avoid significant property damage. The District rule requires advance notice to and approval from the watershed district for work in a private drainage way located within a public right of way. Notice to and approval from the proper governmental roadway entity is also necessary. However, it is recognized that certain situations may arise which require immediate action. In these cases, any emergency work performed without proper notice and approval is done at the owner's own risk.
- Ordinary cultivation or other ordinary agricultural activity.

The District rule contains an explicit reminder that it does not eliminate any other legal requirements or constraints applicable to the proposed work. As regards the drainage code, this means, for example, that a landowner performing work in a public channel may not obstruct flows; that a new outlet into a public system or the connection of unassessed lands is prohibited without drainage authority approval; and that the drainage authority retains all authority under the drainage law to do work within public systems and assess the costs.

The rule also explicitly affirms that it does not displace any private property rights in water flow, or any rights to be protected from such flows. The rule reflects the responsibility of the watershed district to manage surface drainage for the general public benefit. But the District does not act as an arbiter, for example, as between adjacent property owners. So if a property owner excavates a channel or alters their land in a way that affects the flow of water onto adjacent property, property owner may need a permit from the watershed district, but the property owner will be responsible to ensure that they are not infringing on the rights of the adjacent owner by increasing, relocating or diverting flows across the neighboring property.

Finally, this section of the District rule states that a contractor or equipment operator is equally responsible to ensure that there is compliance with the rule. If there is enforcement, this protects a watershed district against claims by a property owner that it wasn't aware of what a contractor was doing, or claims of a contractor that the property owner had assured it that all permits and approvals were in order. It allows a watershed district to look to the property owner, or the party actually doing the work on

the land, or both, to restore and remediate the impacts of any unpermitted work. The property owner and the contractor then can sort out responsibility and cost between themselves.

### **C. Criteria for Surface Drainage Changes**

This section applies to all activities subject to permits except for diking, and states the criteria against which a permit application will be evaluated.

The criteria in the District rule relate back to the policies enumerated in Section 1 of the rule. They are as follows:

- Flows - volume or peak - onto adjacent property may not unreasonably increase.
- Unassessed lands may not be drained into a public system without obtaining express permission from the drainage authority in accordance with 103E.401.
- To the extent reasonable, flows resulting from proposed changes must be retained on-site before discharge, or discharged to off-site retention - natural or artificial - in order to mitigate flow changes and limit downstream sediment transport.
- Erosion and sedimentation in drainage systems will be minimized through a number of means, as feasible:
  - An erosion and sediment control plan must be submitted and approved;
  - Channels must be vegetated above low-water mark;
  - Channel banks must be designed with proper slopes;
  - Hydraulic forces must be assessed and provided for in the design;
  - Grass filter strips establishment should be considered wherever channel work is conducted.
- Finally, there is a general requirement that downstream flows or water quality may not be adversely affected.

The last criterion, in particular, is general, which leaves discretion in the hands of the District and therefore can potentially prompt legal dispute. However, risk of impact or adverse effects can be very specific to each particular situation, and this criterion rests on the need for a watershed district to be able to protect surface drainage systems as necessary in the context of each specific set of circumstances.

Note that the procedural rules include a step by which an applicant may ask the board of managers to reconsider a permit decision before it is appealed. Where the board denies a permit, or includes certain conditions in the permit, this reconsideration step is the opportunity for the District, through its engineer, to re-examine the facts of their decision and to closely review their findings about potential impacts. This would supply the specificity that the rule criterion lacks and establish the foundation for a final determination by the board of managers.

### **D. Criteria for Dikes**

This section states the criteria against which a permit application for a dike will be evaluated. These criteria, as well, related back to Section 1 and are as follows:

- Flows onto adjacent property may not be diverted to an unreasonable extent.
- Retention may not contribute to an increase in down gradient flood peak, and there must be downstream capacity for any change in the hydrograph of flow.

- The dike structure must be designed so that, without additional stabilizing measures, it will withstand flood conditions without erosion or risk of failure.
- The structure outlet, and basin drawdown pumping capacity, must be sized and designed in accordance with the criteria contained in the Minnesota Hydrology Guide.
- The applicant must submit and follow operational procedures that prohibit drawdown pumping during a flood event until downstream flood peaks have receded.

The District rule also provides that as a condition of a permit, the property owner must grant the watershed district a perpetual right to install, maintain and operate traps or gates to prevent outflows from the diked area during and after flood events that cause the dike to be overtopped.

It is noted that here, too, there will be a need to assess the specific circumstances and to apply some judgment in applying these criteria in each case. Again, the reconsideration step in the procedural rule allows for the level of analysis that is necessary if the District and an applicant do not reach concurrence on a given proposal.

### **E. Exhibits**

This section lists application submittal requirements. The basic submittal requirements that may be requested are: (a) maps and information to locate the project; (b) topographic, elevation, dimensional and flow data necessary to evaluate the hydrologic, hydraulic and flood impact of a proposed change in the landscape; and (c) a listing of potentially affected owners.

A watershed district may require any other submittals that it reasonably needs to evaluate a proposed activity for compliance with the rule criteria. This allows the district to keep its mandatory submittals reasonably limited, and to tailor the submittal burden on an applicant to what is needed in order to evaluate the applicant's specific proposal. This presumes that district staff will work with an applicant to identify necessary submittals. If an applicant fails or refuses to supply what the district requests, the district may be unable to properly evaluate an application, and this may be a legal basis to deny the permit.

Minnesota Statutes §15.99 requires a permitting agency, including a watershed district, to act on a permit application within the time specified in the statute. This time starts to run when the district receives the application, unless within 15 business days of receipt, the district advises the applicant that the application is incomplete. In light of this statute, it always is important that a district promptly review an application and determine whether it is complete. This becomes even more important if the district relies on a "catch-all" provision, since an application that otherwise contains required submittals is complete unless and until the district identifies other information that is necessary.

### **F. Definitions**

This section defines certain terms used in the rule. Specifically, it defines "drainage way" as pertaining only to surface drainage systems, which may include tile portions, and establishes the terminology to distinguish between public and private systems. It also: (a) defines drainage system "improvement" as having the same meaning as under Minnesota Statutes chapter 103E. (b) defines the 100-year floodplain in a standard fashion. The definition of "floodplain" does not identify the source of precipitation data used to define the 100-year precipitation event, so that adjustments in the data (such as the present shift from NOAA Technical Paper #40 to Atlas 134 data) will not require a formal revision to the rule.



The definitions included here are best incorporated into a single Definitions section applicable to the watershed district's entire body of rules, with due care to ensure they do not have different meanings under the rules. If they do not have different meanings, it would be acceptable to have definitions of terms as a section of the surface drainage rule itself, and applicable only to that rule.

**SAND HILL RIVER WATERSHED DISTRICT  
DISTRICT RULE**

**SUBSURFACE TILE DRAINAGE**

**Adopted February 14, 2019  
Effective February 14, 2019**

1. POLICY. It is the policy of the Board of Managers to promote the sound construction and management of subsurface tile drainage systems in order to minimize downstream flooding and maximize soil storage and agricultural productivity.
2. REGULATION
  - A. No person shall install or construct any subsurface tile drainage system, **after the effective date** of adoption of these rules, without obtaining a required permit from the Watershed District.
3. CRITERIA. An application for a permit must meet the following requirements:
  - A. All subsurface tile drainage systems must include controls sufficient to prevent flows by holding the water table to within one foot of the ground surface over at least 80 percent of the tiled area;
  - B. The operating plan for the subsurface tile drainage system shall provide for unimpeded flow throughout the fall post-harvest and winter until spring flood conditions are triggered as provided below, or until after the crop as been planted in the spring.
  - C. The operating plan shall provide that the land owner is responsible to monitor national Weather Service Flood Probability for the Red River for the closest downstream mainstem Prediction Site at: <http://water.weather.gov/ahps2/index.php?wfo=fgf>
  - D. The operating plan shall provide that the tile system flows are closed when the National Weather Service Flood Probability Prediction reaches Moderate Flood Stage at the closest mainstem downstream Prediction Site.
  - E. The operating plan may provide that the tile system flow may be controlled in the winter when the average daily temperature falls below 32 degrees Fahrenheit and downstream freezing conditions threaten to create flooding conditions, tile systems that close in the winter shall remain closed until spring floodwater conditions receded below flood stage at the closest mainstem downstream Prediction Site.
  - F. *Note: in addition to triggering the closing of the tile systems to address Red River main stem flooding conditions, the watershed district may also desire to establish other trigger conditions based on local flooding concerns.*
4. EXHIBITS. The following exhibits may be requested to accompany the permit application. Two copies, (standard paper size of 8.5 inches by 11 inches), which include:
  - A. Legal description and site map and/or GPS coordinates to accurate scale showing location of all tiles, surface water inlets, outlet(s), lift stations, pumps, and flow control devices;
  - B. Description of the tile sizes and types (e.g. single wall, dual wall, perforated, non-perforated, plastic, cement, metal, silt sock, etc.);
  - C. Description of surface water inlet design, provision for diking of flow to inlets;
  - D. A copy of the as-built construction plans upon completion of the installation
  - E. Tiling system operating plan;
  - F. Land area to be tiled (acres);

**SAND HILL RIVER WATERSHED DISTRICT  
DISTRICT RULE**

**Pursuant to authority granted by Minnesota Statutes section 103D.341**

**ENFORCEMENT RULE**

**Adopted February 14, 2019**

**Effective February 14, 2019**

1. **MANNER OF ENFORCEMENT.** In the event of a violation or threatened violation of a District rule, permit, order or stipulation, or a provision of Minnesota Statutes chapter 103D, the District may take action to prevent, correct or remedy the violation or any harm to water resources resulting from it. Enforcement action includes but is not limited to injunction; action to compel performance, abatement or restoration; and prosecution as a criminal misdemeanor in accordance with Minnesota Statutes sections 103D.545 and 103D.551.

2. **INVESTIGATION OF NONCOMPLIANCE.** The District's authorized representatives may enter and inspect a property in the watershed to determine the existence of a violation or threatened violation as described in section 1, above.

3. **ADMINISTRATIVE COMPLIANCE ORDER.** The District may issue a preliminary compliance order without notice or hearing when it finds a violation or threatened violation as described in section 1, above, and that the violation or threatened violation presents a serious threat of adverse effect on water resources. A preliminary compliance order may require that the property owner or responsible contractor cease the land-disturbing activity; apply for an after-the-fact permit; and take corrective or restorative action. A preliminary compliance order is not effective for more than ten days. The Board of Managers by resolution may delegate to District staff the authority to issue preliminary compliance orders.

A. **BOARD HEARING.** After due notice and a hearing at which evidence may be presented, the Board of Managers shall make findings. If the Board finds a violation as described in section 1, above, it may issue a compliance order of indefinite duration that may require the property owner or responsible contractor to cease land-disturbing activity; apply for an after-the-fact permit; take corrective or restorative action; reimburse the District for costs under Minnesota Statutes section 103D.345, subdivision 2; and/or be subject to any other remedy within the District's authority. A compliance order may supersede a preliminary order or may be issued without a prior preliminary order.

4. **LIABILITY FOR ENFORCEMENT COSTS.** To the extent provided for by Minnesota Statutes section 103D.345, subdivision 2, a property owner or responsible contractor is liable for investigation and response costs incurred by the District under this rule, including but not limited to the costs to inspect and monitor compliance, engineering and other technical analysis costs, legal fees and costs, and administrative expenses.

5. **CONTRACTOR LIABILITY.** Any individual, firm, corporation, partnership, association or other legal entity contracting to perform work subject to one or more District rules will be responsible to ascertain that the necessary permit has been obtained and that the work complies with the permit, rules and statutes and any applicable District orders or stipulations. A contractor that, itself or through a subcontractor, engages in an activity constituting a violation or threatened violation under section 1, above, is a responsible contractor for purposes of this rule.

## **ENFORCEMENT**

### **Guidance to District Rule**

The Enforcement district rule advises property owners and contractors of the steps the watershed district may take to address a violation or threatened violation of a district rule, permit or other binding district requirement.

#### **1. Manner of Enforcement**

This paragraph states the scope of watershed district authority to take enforcement action, and the forms that action may take. Largely, it restates §§103D.545 and 103D.551 of the Minnesota Statutes, the two provisions of the watershed law that provide the foundation for district enforcement. In short, watershed districts may bring action to stop or prevent a violation, to require compliance and action to fix the consequences of a violation, to recover enforcement expenditures, and to charge a violation as a criminal misdemeanor. Notably, apart from a small fine that may be imposed for a misdemeanor, watershed districts do not have the authority to impose or recover a financial penalty.

Note that the paragraph refers not only to a violation of a district rule, permit, or other regulatory requirement, but also to a threatened violation. If a threatened violation does not lead to an actual violation, the district would not be entitled to an order requiring the responsible party to take action. However, if the facts are supportive, the District may issue an order, or obtain a court injunction, to stop the action that threatens violation. The proposed text allows for a district, in consultation with its legal counsel, to determine in any given case the available and preferred remedies.

#### **2. Investigation of Noncompliance**

This paragraph advises that the district's duly authorized and delegated representatives, without prior notice to or permission of the property owner, may enter land within the watershed to inspect for compliance with district rules, permits and other regulatory requirements. This re-states Minnesota Statutes §103D.335, subdivision 14, which states:

The managers may enter lands inside or outside the watershed district to make surveys and investigations to accomplish the purposes of the watershed district. The watershed district is liable for actual damages resulting from entry.

The district need not know or even suspect that a violation is occurring, nor is its authority limited to lands on which activity taking place is subject to a district permit. The statute permits entry onto any lands as the district finds appropriate in order to effectively carry out its regulatory function.

Note that the statute gives this authority to “[t]he managers.” We believe it is reasonable to read the term “managers” as meaning, more broadly, the district's representatives - managers, staff, contract personnel - both because the term “managers” is used elsewhere in the watershed law simply to refer to the district as a whole and because, as a matter of common sense and necessity, it is not only the district managers themselves who are in the field performing regulatory inspections and oversight on behalf of the district.

The statutory authority under subdivision 14 to enter private property cannot override the U.S. and Minnesota Constitutions, and therefore is limited by the constraints those documents place on entry. Specifically, except under certain limited circumstances, district representatives cannot enter enclosed structures or outside areas that directly surround a residence and its associated structures (garage, shed, etc.). Also, while the statute authorizes entry without notice to or agreement of the landowner, a district may adopt procedures under which it limits the practice of unannounced entry for reasons such as inspector safety and landowner relations. In implementing its inspection authority, a district should coordinate closely with its legal counsel to establish its inspection procedures and practices.

### **3. Administrative Compliance Order**

Under the watershed law, a district board of managers is given the power to issue orders relating to permits and permit compliance. This authority is implemented in paragraph 4, described further below.

However, a condition that is causing or threatening harm to water resources may need attention immediately, or at least before the board of managers practically can be convened to hear a matter and issue an order. For that reason, it is desirable for district staff to be able to exercise the authority to issue an order at the time a violation is observed.

There are two concerns about staff's issuance of legally binding orders in the field. One is a "due process" concern: that the authority of a public agency to issue a legally binding order without giving the recipient notice and a chance to be heard is legally limited. The second is that the authority to issue orders lies in the board of managers and must be specifically delegated to district staff. Historically, court cases have limited the ability of a public decision-making body to delegate its authority to staff. The law is concerned when, by doing so, the body is transferring its broad judgment and discretion to staff.

The model language attempts to address both of these concerns:

- With respect to the due process concern, the district rule requires the district to find that there is a violation or imminent violation that poses a serious water resource threat. In other words, order authority is to be exercised only when it is necessary to avert an important impact that otherwise would occur if no action could be taken until the managers were able to meet.

Also, the rule states that a staff order has effect only for ten days. The intent is that a staff order allows for harm to be prevented and the status quo to be maintained, only until the board of managers has a reasonable opportunity to convene and hear the facts with notice to, and participation of, the affected property owner. The "ten days" in the district rule is not a specific legal requirement; a board of managers may choose a different duration based on the frequency of its regular meetings and its ability to convene for a special meeting. However, the longer this period is, the more legally vulnerable the delegation to staff may be. Optimal practice is for the district administrator to coordinate with the board president so that the time and place of the board hearing can be included in the staff order itself.

- Regarding the delegation concern, the rule requires that delegation be accomplished by written resolution of the board. In this resolution, the board should consider spelling out constraints on staff's authority so that the level of discretion given to staff is only so much as is absolutely necessary to achieve the purpose of the delegation, that is, to protect the resource until the board is able to give notice and hold a hearing. This may include, for example, requiring that an order

contain specific findings as to what the violation is, what the actual or threatened impact is, and why that impact is serious. The resolution also may direct that permittee action demanded by the order be only what is necessary to prevent the resource impact until the board has the opportunity to hear the matter.

If a board of managers is not comfortable delegating order authority to its staff, there are options. For example, the district may simply institute a structured procedure for staff to issue a formal document in the nature of a “notice of probable violation” in place of a legally binding order. The notice would identify the apparent violation and impact, and would advise of recommended compliance actions, but would not purport to order that those actions be taken. Instead, it would advise of a compliance hearing by the board of managers and notify that the hearing will occur unless the suggested actions are timely taken. If the responsible party did not agree with staff’s determination that there was a violation, it could choose not to take the recommended action, and wait to present its case to the board.

While a watershed district order is legally binding, a district can enforce that order only by going to a state district court judge. To have the strongest legal position in front of the judge, a district is always advised to have an order issued not just by its staff, but by its board of managers. This means that even if staff has issued a field order, the board will want to hold a hearing and issue a superseding order before going to court. Therefore there is not always a great difference between a staff order and a staff notice.

#### **4. Board Hearing**

This paragraph provides for a board hearing before a district compliance order (other than a preliminary order) may be issued. Because a district order may impose substantial cost on a property owner or contractor - by delaying work, requiring restoration action or imposing district costs - the law requires that the potential recipient of an order be given notice and an opportunity to appear and present evidence to the board before the board makes findings. The law does not specify how many days’ notice must be given, how notice must be given, or the specific procedures that must be afforded at the hearing beyond an “opportunity to be heard.” District legal counsel should be consulted on these details, and whether they should be included in the rule language or simply followed as district practice.

The paragraph also makes clear that on the basis of a finding of violation, a board of managers may order any remedy “within the District’s authority.” These remedies include: (a) a directive to cease and desist until an after-the-fact permit is applied for and issued; (b) a requirement that the responsible party bring the activity into compliance and/or take steps to remediate impacts from a violation; and (c) reimbursement of the district for its costs incurred in compliance monitoring and enforcement. As noted previously, a watershed district cannot impose a monetary penalty. Also, of course, the district cannot itself conduct criminal proceedings; a misdemeanor action would need to be brought in state district court by the proper law enforcement agency.

Finally, the paragraph makes clear that the board has the authority to consider and issue an order, whether or not there is a preliminary, staff-issued field order. If there is not actual or threatened harm to justify a staff order, then the district may simply notice and hold a board compliance hearing. Typically, this will follow staff efforts to work with a violator to secure compliance, but it can occur whenever the board of managers deems appropriate and need not follow informal or formal staff action.

## **5. Liability for Enforcement Costs**

Paragraph 5 of the district rule states that a property owner or responsible contractor will be responsible for district costs to investigate and respond to a violation of a district rule, permit or other regulatory requirement to the extent that Minnesota Statutes §103D.345, subdivision 2, allows. This statute says that a watershed district may charge an “inspection fee.” It then states how the fee may be calculated:

The inspection fee must be used to cover actual costs related to a field inspection. Inspection costs include investigation of the area affected by the proposed activity, analysis of the proposed activity, services of a consultant, and any required subsequent monitoring of the proposed activity. Costs of monitoring an activity authorized by permit may be charged and collected as necessary after issuance of the permit.

Accordingly, if there has been an inspection, then the cost of the inspection, any analysis related to it, and any subsequent monitoring related to it may be recovered from the property owner or other responsible party. It further says that consultant costs related to the inspection, and to subsequent analysis and monitoring, are recoverable costs as well. This would include engineering and other technical consultants, but also may be read to include fees paid to district legal counsel for assistance in evaluating compliance and carrying out enforcement procedures. To recover these costs, it is important for a district to keep careful records of them.

Enforcement may result in a variety of costs to a district - staff hours, administrative and consultant costs, sampling and analysis costs, manager per diems for special meetings, contract costs for restoration work undertaken by the district, and potentially costs for court proceedings. The proposed rule language does not take a position on the precise extent to which each of these falls within the scope of the statute. Each district should determine its position with the advice of district legal counsel (for example, attorney fees for court proceedings may be excluded from the scope of §103D.345, subdivision 2, by virtue of separate treatment in §103D.545, subdivision 3). Note also that in the absence of the authority to impose a fine, a watershed district’s ability to require that a responsible party reimburse its costs may be a measurable financial incentive for early compliance.

## **6. Contractor Liability**

The watershed law requires that watershed districts adopt and apply rules governing activities that may injure water resources, but it does not anywhere state who is subject to enforcement in the event a rule, or a permit issued under the rules, is not followed. It is good practice to require the property owner of record to be the named permit applicant, so that the authority to perform the proposed work is established and the district always has an official location where the permittee can be located. Further, in the event of noncompliance, it will be necessary for the property owner to be accountable for the violation to ensure that there is legal access to the property for any compliance work that is needed. In this case, it is reasoned that if a contractor has actually performed the work that does not comply, the property owner has a contract relationship with the contractor that will allow the property owner to demand that the contractor address the violation and hold the property owner harmless for costs.

However, there is nothing in the watershed law that prevents a district from also holding directly accountable the contractor that, itself or through its subcontractor, is responsible for the violation. A district may decide that it will have more leverage to gain compliance if both the property owner and the contractor are directly subject to district orders and enforcement proceedings. If the district encounters a situation where the property owner appears to be innocent of the violation, holding the contractor

responsible as well allows the district to take enforcement action directly against the contractor with minimum imposition on the property owner.

Paragraph 6 establishes that a contractor also is responsible for a violation if it, or its subcontractor, performed the activity constituting the violation. This section defines the term “responsible contractor” as it is used throughout the rule to denote a contractor that may be subject to enforcement.



# SAND HILL RIVER WATERSHED DISTRICT

## WD 103E Systems Only Buffer Rule

### Buffer Law Implementation

Adopted February 14, 2019

Effective February 14, 2019

## 1.0 Policy

It is the policy of the Board of Managers to:

(a) Provide public drainage system ditches with vegetated buffers and water quality practices to achieve the following purposes:

(1) Protect state water resources from erosion and runoff pollution;

(2) Stabilize soils, and banks.

(b) Coordinate closely with the District's landowners, soil and water conservation districts and counties, and utilize local knowledge and data, to achieve the stated purposes in a collaborative, effective and cost- efficient manner.

(c) Integrate District authorities under Minnesota Statutes §§103D.341, 103E.021, and 103F.48 to provide for clear procedures to achieve the purposes of the rule.

(d) The District will implement and enforce buffers through the use of Drainage Law (Minnesota Statutes §§103E.021 and 103E.351) and when that cannot be accomplished through the use of Administrative Penalty Order (APO) powers granted through Minnesota Statute §103F.48.

## 2.0 Definitions

BWSR: Minnesota Board of Water and Soil Resources.

Buffer: An area consisting of perennial vegetation, excluding invasive plants and noxious weeds

Buffer Protection Map: means buffer maps established and maintained by the commissioner of natural resources.

Buffer law: Minnesota Statutes §103F.48, as amended.

Commissioner: Commissioner of the Minnesota Department of Natural Resources.

Cultivation farming: Practices that disturb vegetation roots and soil structure, or involve

vegetation cutting or harvesting that impairs the viability of perennial vegetation.

Drainage authority: The public body having jurisdiction over a drainage system under Minnesota Statutes chapter 103E.

Landowner: means the holder of the fee title, the holder's agents or assigns, any lessee, licensee, or operator of the real property and includes all land occupiers as defined by Minn. Stat. §103F.401, subd. 7 or any other party conducting farming activities on or exercising control over the real property

Parcel: means a unit of real property that has been given a tax identification number maintained by the County.

NRCS: U.S. Department of Agriculture, Natural Resource Conservation Service.

Responsible Party: A party other than a landowner that directly or indirectly controls the condition of riparian land subject to a buffer under the rule.

Public water: As defined at Minnesota Statutes §103G.005, subdivision 15, and included within the public waters inventory as provided in Minnesota Statutes §103G.201.

Riparian protection: A water quality outcome for the adjacent waterbody equivalent to that which would be provided by the otherwise mandated buffer, from a facility or practice owned or operated by a municipal separate storm sewer system (MS4) permittee or subject to a maintenance commitment in favor of that permittee at least as stringent as that required by the MS4 general permit in effect.

Shoreland standards: Local shoreland standards as approved by the Commissioner or, absent such standards, the shoreland model standards and criteria adopted pursuant to Minnesota Statutes §103F.211.

Structure: An above-ground building or other improvement that has substantial features other than a surface.

SWCD: Soil and Water Conservation District.

### **3.0 Data sharing/management**

- 3.1 The District may enter into arrangements with an SWCD, a county, the BWSR and other parties with respect to the creation and maintenance of, and access to, data concerning buffers and alternative practices under this rule.
- 3.2 The District will manage all such data in accordance with the Minnesota Data Practices Act and any other applicable laws.

### **4.0 Vegetated Buffer Requirement**

- 4.1 Except as subsection 4.3 may apply, a landowner must maintain a buffer on land that is adjacent to a public drainage system ditch identified and mapped on the buffer protection map established and maintained by the Commissioner pursuant to the buffer law.

- The buffer must be of a 16.5-foot minimum width. This rule does not apply to the portion of public drainage systems consisting of tile.
- The buffer is measured from the top or crown of bank. Where there is no defined bank, measurement will be from the normal water level. The District will determine normal water level in accordance with BWSR guidance. , The District will determine top or crown of bank in the same manner as for measuring the perennially vegetated strip under Minnesota Statutes §103E.021.

4.2 The requirement of subsection 4.1 applies to all public drainage ditches within the legal boundary for which the District is the drainage authority.

4.3 The requirement of subsection 4.1 does not apply to land that is:

- Enrolled in the federal Conservation Reserve Program;
- Used as a public or private water access or recreational use area including stairways, landings, picnic areas, access paths, beach and watercraft access areas, provided the area in such use is limited to what is permitted under shoreland standards or, if no specific standard is prescribed, what is reasonably necessary;
- Used as the site of a water-oriented structure in conformance with shoreland standards or, if no specific standard is prescribed, what is reasonably necessary;
- Covered by a road, trail, building or other structure;
- Regulated by a national pollutant discharge elimination system/state disposal system (NPDES/SDS) municipal separate storm sewer system, construction or industrial permit under Minnesota Rules, chapter 7090, and the adjacent waterbody is provided riparian protection;
- Part of a water-inundation cropping system; or
- In a temporary non-vegetated condition due to drainage tile installation and maintenance, alfalfa or other perennial crop or plant seeding, or a construction or conservation project authorized by a federal, state or local government unit.

## **5.0 Drainage System Acquisition and Compensation for Buffer**

5.1 In accordance with Minnesota Statutes §103F.48, subdivision 10(b), a landowner owning land within the benefited area of and adjacent to a public drainage ditch may request that the District, as the drainage authority, acquire and provide compensation for the buffer strip required under this rule.

- 5.2 The request may be made to use Minnesota Statutes §103E.021, subdivision 6, or by petition pursuant to Minnesota Statutes §103E.715, subdivision 1.
- 5.3 The decision on the request is within the judgment and discretion of the District, unless the request concerns a buffer strip mandated by Minnesota Statutes §103E.021.
- 5.4 If the request is granted or the petition proceeds, the requirements of the buffer strip and the compensation to be paid for its incorporation into the drainage system will be determined in accordance with the statutes referenced in paragraph 5.1 and associated procedures. When the order establishing or incorporating the buffer strip is final, the buffer strip will become a part of the drainage system and thereafter managed by the District in accordance with the drainage code.
- 5.5 On a public drainage ditch that also is a public water subject to a 50-foot average buffer, the drainage system will be required to acquire only the first 16.5 feet of the buffer.
- 5.6 The District, on its own initiative pursuant to Minnesota Statutes §§103F.48 and 103E.021, may acquire and provide compensation for buffer strips required under this rule on individual or multiple properties along a public drainage system. The Board of Managers findings and order will be delivered or transmitted to the landowner.
- 5.7 This section does not displace, the terms of Minnesota Statutes chapter 103E requiring or providing for drainage system establishment and acquisition of vegetated buffer strips along public ditches.

## **6.0 Action for Noncompliance**

- 6.1 When the District observes potential noncompliance or receives a third party complaint from a private individual or entity, or from another public agency (such as the SWCD), it will determine the appropriate course of action to confirm compliance status. This may include communication with the landowner or his/her agents or operators, communication with the shoreland management authority, inspection or other appropriate steps necessary to verify the compliance status of the parcel. On the basis of this coordination, the SWCD may issue a notification of noncompliance to the District. If the SWCD does not transmit such a notification, the District will not pursue a compliance or enforcement action under Minnesota Statutes §103F.48, but may pursue such an action under the authority of Minnesota Statutes §§103E.021 and 103D.341 and section 6 of this rule.
- 6.2 On receipt of an SWCD notification of noncompliance, or if acting solely under authority of Minnesota Statutes §§103E.021 or 103D.341, the District will determine first whether sufficient public drainage system easement exists to establish the required vegetative buffer. If a sufficient easement does not exist, the District will attempt to acquire the necessary easements through incremental buffer establishment provided in §103E.021, subd. 6 or through a redetermination of benefits provided in Minnesota Statutes §103E.351 to establish the required buffers. The establishment of the required buffers will occur within 12 months of the determination that inadequate easement exists, and no more than 18 months from the receipt of a SWCD notification of noncompliance or the Watershed District decision to establish the required buffers.
- 6.3 If the District is unable to acquire the necessary easements through incremental buffer establishment provided in §103E.021, subd. 6 or through a redetermination of benefits, or if

sufficient easement does exist and an established buffer has been adversely altered, the District will issue a corrective action list and practical schedule for compliance to the landowner or responsible party. The District may inspect the property and will consult with the SWCD, review available information and exercise its technical judgment to determine appropriate and sufficient corrective action and a practical schedule for such action. The District will maintain a record establishing the basis for the corrective action that it requires.

- 6.3.1 The District will issue the corrective action list and schedule to the landowner of record. The landowner may be the subject of enforcement liabilities under subsections 7.1 and 7.2. The District may deliver or transmit the list and schedule by any means reasonably determined to reach the landowner, and will document receipt. However, a failure to document receipt will not preclude the District from demonstrating receipt or knowledge in an enforcement proceeding under section 7.0.
- 6.3.2 The corrective action list and schedule will identify the parcel of record to which it pertains and the portion of that parcel that is alleged to be noncompliant. It will describe corrective actions to be taken, a schedule of intermediate or final dates for correction, a compliance standard against which it will judge the corrective action, and a statement that failure to respond to this list and schedule will result in an enforcement action. The District will provide a copy of the list and schedule to the BWSR.
- 6.3.3 At any time a landowner or responsible party may supply information in support of a request to modify a corrective action or the schedule for its performance. On the basis of any such submittal or at its own discretion, the District may modify the corrective action list or schedule, and deliver or transmit the modified list and schedule in accordance with paragraph 6.3.1, or may advise the landowner in writing that it is not pursuing further compliance action.
- 6.3.4 At any time after the District has issued the list and schedule, a landowner, or authorized agent or operator of a landowner or responsible party, may request that the SWCD issue a validation of compliance with respect to property for which the list and schedule has been issued. On District receipt of the validation: (a) the list and schedule will be deemed withdrawn for the purpose of subsection 7.2, and the subject property will not be subject to enforcement under that subsection; and (b) the subject property will not be subject to enforcement under subsection 6.3
- 6.3.5 A corrective action list and schedule is not considered a final decision subject to appeal. An objection to a finding of noncompliance, or to any specified corrective action or its schedule, is reserved to the landowner or responsible party and may be addressed in an enforcement proceeding under section 7.0 .

## **7.0 Enforcement**

- 7.1 Under authority of Minnesota Statutes §§103E.021, 103D.545, and 103D.551, the District may seek remedies for noncompliance with section 4.0 against any landowner or responsible party including but not limited to: (a) reimbursement of District compliance costs under Minnesota Statutes §§103D.345 and 103E.021 and/or an escrow for same; (b) administrative compliance order; (c) district court remedy including injunction, restoration or abatement order, authorization for District entry and/or order for cost recovery; and (d)

referral to county attorney for criminal misdemeanor prosecution.

7.2 In instances where existing vegetation on the ditch buffer easement has been adversely altered and has not been restored, the District may collect compliance expenses in accordance with Minnesota Statutes §§103E.021 from a landowner for noncompliance with the corrective action list and schedule, as provided under paragraphs 6.3.1 and 6.3.2. The District will restore any adversely altered buffer and charge the landowner for the cost of the restoration if the landowner does not complete the requirements of the corrective action list and schedule.

7.3 In instances where a ditch buffer easement area cannot be established in a timely manner, the District may issue an administrative order imposing a monetary penalty against a landowner or responsible party for noncompliance with the corrective action list and schedule, as provided under paragraphs 7.3.1 and 7.3.2. The penalty will continue to accrue until the noncompliance is corrected as provided in the corrective action list and schedule.

7.3.1 The penalty for a landowner on a single parcel that previously has not received an administrative penalty order issued by the District shall be:

- (a) \$0 for 11 months after issuance of the corrective action list and schedule;
- (b) \$50 per parcel per month for the first six (6) months (180 days) following the time period in (a); and
- (c) \$200 per parcel per month after six (6) months (180 days) following the time period in (b).

7.3.2 The penalty for a landowner on a single parcel that previously has received an administrative penalty order issued by the District shall be:

- (a) \$50 per parcel per day for 180 days after issuance of the corrective action list and schedule; and
- (b) \$200 per parcel per day for after 180 days following the time period in (a).

7.4 The administrative order will state:

- i. The facts constituting a violation of the buffer requirements;
- ii. The statute and/or rule that has been violated;
- iii. Prior efforts to work with the landowner to resolve the violation;
- iv. For an administrative penalty order, the amount of the penalty to be imposed, the date the penalty will begin to accrue, and the date when payment of the penalty is due; and
- v. The right of the landowner or responsible party to appeal the order.

A copy of the APO must be sent to the SWCD and BWSR.

7.5 An administrative order under subsection 7.1 or 7.3 will be issued after a compliance hearing before the District Board of Managers. The landowner and any other responsible parties will receive written notice at least two weeks in advance of the hearing with a statement of the facts alleged to constitute noncompliance and a copy or link to the written record on which District staff intends to rely, which may be supplemented at the hearing.

A landowner or responsible party may be represented by counsel, may present and question witnesses, and may present evidence and testimony to the Board of Managers. The District will make a verbatim record of the hearing.

- 7.6 After a hearing noticed and held for consideration of an administrative penalty or other administrative order, the Board of Managers may issue findings and an order imposing any authorized remedy or remedies.
  - 7.6.1 The amount of an administrative penalty will be based on considerations including the extent, gravity and willfulness of the noncompliance; its economic benefit to the landowner or responsible party; the extent of the landowner or responsible party's diligence in addressing it; any noncompliance history; the public costs incurred to address the noncompliance; and other factors as justice may require.
  - 7.6.2 The Board of Managers findings and order will be delivered or transmitted to the landowner and other responsible parties. An administrative penalty order may be appealed to the BWSR in accordance with Minnesota Statutes §103F.48, subdivision 9, and will become final as provided therein. The District may enforce the order in accordance with Minnesota Statutes §116.072, subdivision 9. Other remedies imposed by administrative order may be appealed in accordance with Minnesota Statutes §103D.537.
  - 7.6.3 The Board of Managers may forgive an administrative penalty, or any part thereof, on the basis of diligent correction of noncompliance following issuance of the findings and order and such other factors as the Board finds relevant.
- 7.7 Absent a timely appeal pursuant to paragraph 7.6.2, an administrative penalty is due and payable to the District as specified in the administrative penalty order.
- 7.8 Nothing within this rule diminishes or otherwise alters the District's authority under Minnesota Statutes, chapter 103E with respect to any public drainage system for which it is the drainage authority, or any buffer strip that is an element of that system.
- 8.0 Effect of Rule**
  - 8.1 If any section, provision or portion of this rule is adjudged unconstitutional or invalid by a court of competent jurisdiction, the remainder of the rule is not affected thereby.
  - 8.2 Any provision of this rule, and any amendment to it, that concerns District authority under Minnesota Statutes §103F.48 is not effective until an adequacy determination has been issued by the BWSR. Authority exercised under Minnesota Statutes chapter 103D and 103E does not require a BWSR adequacy determination.

### Local Funding Authorities

**Purpose:** This table provides an overview of Minnesota statutes and laws that provide authorities to local governments to fund water management projects, to be used by local governments while exploring funding options for locally funded water projects. Does not include fees, fines, or wetland banking, grants, etc. This is not a legal document and should not be considered comprehensive, complete, or authoritative.

note: “metro” refers to Anoka, Carver, Dakota, Hennepin, Ramsey, and Washington counties or watershed organizations in the 7-county metro area.

| Citation                  | Applies to   | Summary (please see details in the full text of each provision)   |
|---------------------------|--|---|
| <a href="#">§40A.152</a>  | Counties (metro)   | Money from the county conservation account (see <a href="#">chapter 287</a> ) must be spent by the county to reimburse the county and taxing jurisdictions within the county for revenue lost under the conservation tax credit under <a href="#">§273.119</a> or the valuation of agricultural preserves under <a href="#">§473H.10</a> . Money remaining in the account after reimbursement may be spent on: 1) agricultural land preservation and conservation planning and implementation of official controls under this chapter or chapter <a href="#">473H</a> ; 2) soil conservation activities and enforcement of soil loss ordinances; 3) incentives for landowners who create exclusive agricultural use zones; 4) payments to municipalities within the county for the purposes of clauses 1-3. |
| <a href="#">§103B.241</a> | Watershed districts & watershed management organizations (metro)           | May levy a tax to pay for plan preparation costs & projects in the adopted plan necessary to implement the Metropolitan Water Management Program.   |
| <a href="#">§103B.245</a> | Watershed districts & watershed management organizations (metro)           | May establish a watershed management tax district within the watershed to pay the costs of: planning required under §§ <a href="#">103B.231</a> and <a href="#">103B.235</a> , the capital costs of water management facilities described in the capital improvement program of the plans, and normal & routine maintenance of the facilities.  |
| <a href="#">§103B.251</a> | Watershed districts & watershed management organizations (metro), counties | May certify for payment by the county all or any part of the cost of a capital improvement contained in the capital improvement program of plans developed in accordance with <a href="#">§103B.231</a> . Counties may issue general obligation bonds to pay all or part of the cost of project. The county may pay the principal and interest on the bonds by levying a tax on all property located in the watershed or subwatershed in which the bonds are issued. Loans from counties to watershed districts for the purposes of implementing this section are not subject to the loan limit set forth in <a href="#">§103D.335</a> .  |



| Citation   | Applies to   | Summary <i>(please see details in the full text of each provision)</i>  |
|--|--|---|
| <a href="#">§103B.331</a><br>Subdivisions<br>3 & 4 | Counties   | (3) May charge users for services provided by the county necessary to implement the local water management plan.  |
|  |  | (4) May establish one or more special taxing districts within the county and issue bonds to finance capital improvements under the Comprehensive Local Water Management Act. After adoption of the resolution, a county may annually levy a tax on all taxable property in the district.  |
| <a href="#">§103B.335</a>                          | Counties, municipalities, or townships                           | May levy a tax to implement the Comprehensive Local Water Management Act or a comprehensive watershed management plan ( <a href="#">§103B.3363</a> ). A county may levy amounts needed to pay the reasonable costs to SWCDs and WDs of administering and implementing priority programs identified in an approved & adopted plan or comprehensive watershed management plan.              |
| <a href="#">§103B.555</a><br>Subdivisions<br>1 & 3 | Counties   | (1) May establish a Lake Improvement District and impose service charges on the users of lake improvement district services within the district. May levy an ad valorem tax solely on property within the lake improvement district for projects of special benefit to the district; may impose or issue any combination of service charges, special assessments, obligations, and taxes. |
|  |  | (3) A tax under Subd. 1 may be in addition to amounts levied on all taxable property in the county for the same/similar purposes.   |
| <a href="#">§103C.331</a><br>Subdivision<br>16     | County boards on behalf of soil and water conservation districts | May levy an annual tax on all taxable real property in the district for the amount that the board determines is necessary to meet the requirements of the district.   |
| <a href="#">§103D.335</a>                          | Watershed districts  | A watershed district has the power to incur debts, liabilities, and obligations and to provide for assessments and to issue certificates, warrants, and bonds.  |
| <a href="#">§103D.601</a>                          | Watershed districts  | May set up special taxing districts via petition to conduct larger, Capital Improvement Projects (CIP). The costs to the affected parties cannot exceed \$750,000.  |
| <a href="#">§103D.615</a>                          | Watershed districts  | May declare an emergency and order that work be done without a contract. The cost of work undertaken without a contract may be assessed against benefitted properties or raised by an ad valorem tax levy if the cost is not more than 25% of the most recent administrative ad valorem levy and the work is found to be of common benefit to the watershed district.                     |

| Citation  | Applies to           | Summary <i>(please see details in the full text of each provision)</i>  |
|---|----------------------|---|
| <a href="#">§103D.729</a>   | Watershed districts  | May establish a water management district or districts in the territory within the watershed to collect revenues and pay the costs of projects initiated under §§ <a href="#">103B.231</a> , <a href="#">103D.601</a> , <a href="#">103D.605</a> , <a href="#">103D.611</a> , or <a href="#">103D.730</a> . ( <a href="#">Guidelines for creating water management districts</a> )  |
| <a href="#">§103D.901</a>   | Watershed districts  | County auditors assess the amount specified in an assessment statement filed by managers. The county may issue bonds ( <a href="#">§103E.635</a> ). An assessment may not be levied against a benefited property in excess of the amount of benefits received.  |
| <a href="#">§103D.905</a><br>Subdivisions<br>2,3, 7-9                               | Watershed districts  | Established funds for watershed districts (not a complete list – see full statute language): <b>Organizational expense fund</b> - consisting of an ad valorem tax levy, shall be used for organizational expenses and preparation of the watershed management plan for projects. <b>General fund</b> - consisting of an ad valorem tax levy, shall be used for general administrative expenses and for the construction or implementation and maintenance of projects of common benefit to the watershed district. May levy a tax not to exceed 0.00798 percent of estimated market value to pay the cost attributable to projects initiated by petition. <b>Repair and maintenance funds</b> - established under <a href="#">§103D.631</a> , Subd. 2. <b>Survey and data acquisition fund</b> - consists of the proceeds of a property tax that can be levied only once every 5 years and may not exceed 0.02418 percent of estimated market value. <b>Project tax levy</b> - a WD may levy a tax: 1. To pay the costs of projects undertaken by the WD which are to be funded, in whole or in part, with the proceeds of grants or construction or implementation loans under the Clean Water Partnership Law; 2. To pay the principal of, or premium or administrative surcharge (if any), and interest on, the bonds and notes issued by the WD pursuant to <a href="#">§103F.725</a> ; 3. To repay the construction or implementation loans under the Clean Water Partnership Law. |
| <a href="#">§103E.011</a><br>Subdivision 5  | Drainage authorities | A drainage authority can accept and use external sources of funds together with assessments from benefited landowners in the watershed of the drainage system for the purposes of flood control, wetland restoration, or water quality improvements.  |
| <a href="#">§103E.015</a><br>Subdivision 1a   | Drainage authorities | When planning a “drainage project” or petitioned repair, the drainage authority must investigate the potential use of external sources of funding, including early coordination for funding and technical assistance with other applicable local government units.  |
| <a href="#">§103E.601</a><br><a href="#">§103E.635</a><br><a href="#">§103E.641</a> | Drainage authorities | Funding of all costs for constructed “ <b>drainage projects</b> ” are apportioned to benefited properties within the drainage system pro rata on the basis of the benefits determined (§103E.601). After the contract for the construction of a drainage project is awarded, the board of an affected county may issue bonds of the county  |

| Citation   | Applies to                              | Summary <i>(please see details in the full text of each provision)</i>  |
|--|---|---|
|  |   | in an amount necessary to pay the cost of establishing and constructing the drainage project. (§103E.635). Drainage authorities may issue drainage funding bonds (§103E.641).   |
| <a href="#">§103E.728</a><br><a href="#">§103E.731</a><br><a href="#">§103E.735</a>    | Drainage authorities                    | Costs for drainage system <b>repairs</b> are apportioned pro rata on all benefited properties of record. The drainage authority may charge an additional assessment on property that is in violation of §103E.021 (ditch buffers) or a county soil loss ordinance (§103E.728). If there is not enough money in the drainage system account to make a repair, the board shall assess the costs of the repairs on all property and entities that have been assessed benefits for the drainage system (§103E.731). To create a repair fund for a drainage system to be used only for repairs, the drainage authority may apportion and assess an amount against all property and entities benefited by the drainage system, including property not originally assessed and subsequently found to be benefited according to law. (§103E.735). |
| Chapter <a href="#">287</a>  | Counties                                | Counties participating in the agricultural land preservation program impose a fee of \$5 per transaction on the recording or registration of a mortgage or deed that is subject to tax under §§ <a href="#">287.05</a> and <a href="#">287.21</a> .   |
| Chapter <a href="#">365A</a>   | Towns                                   | Townships may create subordinate service districts with special taxing authority. Requires a petition signed by at least 50 percent of the property owners in the part of the town proposed for the subordinate service district.   |
| <a href="#">§373.475</a>   | Counties                                | A county board must deposit the money received from the sale of land under Laws 1998, chapter 389, article 16, section 31, subd. 3, into an environmental trust fund. The county board may spend interest earned on the principal only for purposes related to the improvement of natural resources.  |
| Chapter <a href="#">429</a>  | Municipalities                          | May levy special assessments against properties benefitting from special services (including curbs, gutters and storm sewer, sanitary sewers, holding ponds, and treatment plants).   |
| <a href="#">§444.075</a>   | Municipalities                          | May collect stormwater utility fees to build, repair, operate & maintain stormwater management systems.   |
| <a href="#">§462.358</a><br>Subdivision<br>2b(c)                                       | Municipalities                          | May accept a cash fee for lots created in a subdivision or redevelopment that will be served by municipal sanitary sewer and water service or community septic and private wells. May charge dedication fees for the acquisition and development or improvement of wetlands and open space based on an approved parks and open space plan.  |
| <a href="#">M. L. 1998,</a><br><a href="#">Chapter 389</a><br>Article 3,<br>Section 29 | Red River Watershed<br>Management Board | Watershed Districts that are members of the Red River Watershed Management Board may levy an ad valorem tax not to exceed 0.04836 percent of the taxable market value of all property within their district. This levy is in excess of levies authorized by §103D.905.  |

# APPENDIX F. MEMORANDUM OF AGREEMENT

## MEMORANDUM OF AGREEMENT

This agreement (Agreement) is made and entered into by and between:

The Counties of Polk, Mahnomen and Norman by and through their respective County Board of Commissioners, and

The East Polk and West Polk, Norman, and Mahnomen Soil and Water Conservation Districts, by and through their respective Soil and Water Conservation District Board of Supervisors, and

The Sand Hill River Watershed District, by and through their respective Board of Managers;

Collectively referred to as the “parties.”

**WHEREAS**, the Counties of this Agreement are political subdivisions of the State of Minnesota, with authority to carry out environmental programs and land use controls, pursuant to Minnesota Statutes Chapter 375 and as otherwise provided by law; and

**WHEREAS**, the Soil and Water Conservation Districts (SWCDs) of this Agreement are political subdivisions of the State of Minnesota, with statutory authority to carry out erosion control and other soil and water conservation programs, pursuant to Minnesota Statutes Chapter 103C and as otherwise provided by law; and

**WHEREAS**, the Watershed Districts of this Agreement are political subdivisions of the State of Minnesota, with statutory authority to carry out conservation of the natural resources of the state by land use controls, flood control, and other conservation projects for the protection of the public health and welfare and the provident use of the natural resources, pursuant to Minnesota Statutes Chapters 103B, 103D and as otherwise provided by law; and

**WHEREAS**, the parties to this Agreement have a common interest and statutory authority to prepare, adopt, and assure implementation of a comprehensive watershed management plan *in the Sand Hill River Watershed* to conserve soil and water resources through the implementation of practices, programs, and regulatory controls that effectively control or prevent erosion, sedimentation, siltation and related pollution in order to preserve natural resources, ensure continued soil productivity, protect water quality, reduce damages caused by floods, preserve wildlife, protect the tax base, and protect public lands and waters; and

**WHEREAS**, with matters that relate to coordination of water management authorities pursuant to Minnesota Statutes Chapters 103B, 103C, and 103D with public drainage systems pursuant to Minnesota Statutes Chapter 103E, this Agreement does not change the rights or obligations of the public drainage system authorities.

**WHEREAS**, the Parties have formed this Agreement for the specific goal of developing a plan pursuant to Minnesota Statutes § 103B.801, Comprehensive Watershed Management Planning, also known as *One Watershed, One Plan*.

**NOW, THEREFORE**, the Parties hereto agree as follows:

1. **Purpose:** The Parties to this Agreement recognize the importance of partnerships to plan and implement protection and restoration efforts for the Sand Hill River Watershed (See **Attachment A**). The purpose of this Agreement is to collectively develop and adopt, as local government units, a coordinated watershed management plan for implementation per the provisions of the Plan. Parties signing this agreement will be collectively referred to as Sand Hill Planning Partnership.
2. **Term:** This Agreement is effective upon signature of all Parties in consideration of the Board of Water and Soil Resources (BWSR) Operating Procedures for One Watershed, One Plan; and will remain in effect until adoption of the plan by all parties, unless canceled according to the provisions of this Agreement or earlier terminated by law.
3. **Adding Additional Parties:** A qualifying party desiring to become a member of this Agreement shall indicate its intent by adoption of a board resolution prior to date to be determined. The party agrees to abide by the terms and conditions of the Agreement; including but not limited to the bylaws, policies and procedures adopted by the Policy Committee.
4. **Withdrawal of Parties:** A party desiring to leave the membership of this Agreement shall indicate its intent in writing to the Policy Committee in the form of an official board resolution. Notice must be made at least 30 days in advance of leaving the Agreement.
5. **General Provisions:**
  - a. **Compliance with Laws/Standards:** The Parties agree to abide by all federal, state, and local laws; statutes, ordinances, rules and regulations now in effect or hereafter adopted pertaining to this Agreement or to the facilities, programs, and staff for which the Agreement is responsible.
  - b. **Indemnification:** Each party to this Agreement shall be liable for the acts of its officers, employees or agents and the results thereof to the extent authorized or limited by law and shall not be responsible for the acts of any other party, its officers, employees or agents. The provisions of the Municipal Tort Claims Act, Minnesota Statute Chapter 466 and other applicable laws govern liability of the Parties. To the full extent permitted by law, actions by the Parties, their respective officers, employees, and agents pursuant to this Agreement are intended to be and shall be construed as a “cooperative activity.” It is the intent of the Parties that they shall be deemed a “single governmental unit” for the purpose of liability, as set forth in Minnesota Statutes § 471.59, subd. 1a(a). For purposes of Minnesota Statutes § 471.59, subd. 1a(a) it is the intent of each party that this Agreement does not create any liability or exposure of one party for the acts or omissions of any other party.
  - c. **Records Retention and Data Practices:** The Parties agree that records created pursuant to the terms of this Agreement will be retained in a manner that meets their respective entity’s records retention schedules that have been reviewed and approved by the State in accordance with Minnesota Statutes § 138.17. The Parties further agree that records prepared or maintained in furtherance of the agreement shall be subject to the Minnesota Government Data Practices Act.

At the time this agreement expires, all records will be turned over to the *Sand Hill River Watershed District* for continued retention.

- d. **Timeliness:** The Parties agree to perform obligations under this Agreement in a timely manner and keep each other informed about any delays that may occur.
- e. **Extension:** The Parties may extend the termination date of this Agreement upon agreement by all Parties.
- f. **Termination:** The Parties anticipate that this Agreement will remain in full force and effect through the term of the grant agreement with BWSR and until cancelled by all parties or until end of grant agreement consistent with the term of the grant agreement, unless otherwise terminated in accordance with law or other provisions of the Agreement.

## 6. Administration:

- a. **Establishment of Committees for Development of the Plan.** The Parties agree to designate one representative, who must be an elected or appointed member of the governing board, to a Policy Committee for development of the watershed-based plan and may appoint one or more technical representatives to an Advisory Committee for development of the plan in consideration of the BWSR Operating Procedures for One Watershed, One Plan.
  - i. The Policy Committee will meet as needed to decide on the content of the plan, serve as a liaison to their respective boards, and act on behalf of their Board. Each representative shall have one vote.
  - ii. Each governing board may choose one alternate to serve on the Policy Committee as needed in the absence of the designated member.
  - iii. The Policy Committee will establish bylaws within 90 days of the execution of this document to describe the functions and operations of the committee(s).
  - iv. The Advisory Committee will meet monthly or as needed to assist and provide technical support and make recommendations to the Policy Committee on the development and content of the plan.
- b. **Submittal of the Plan.** The Policy Committee will recommend the plan to the Parties of this agreement. The Policy Committee will be responsible for initiating a formal review process for the watershed-based plan conforming to Minnesota Statutes Chapters 103B and 103D, including public hearings. Upon completion of local review and comment, and approval of the plan for submittal by each party, the Policy Committee will submit the watershed-based plan jointly to BWSR for review and approval.
- c. **Adoption of the Plan.** The Parties agree to adopt and begin implementation of the plan within 120 days of receiving notice of state approval, and provide notice of plan adoption pursuant to Minnesota Statutes Chapters 103B and 103D.

7. **Fiscal Agent:** *Sand Hill River Watershed District* will act as the fiscal agent for the purposes of this Agreement and agrees to:
  - a. Accept all responsibilities associated with the implementation of the BWSR grant agreement for developing a watershed-based plan.
  - b. Perform financial transactions as part of grant agreement and contract implementation.
  - c. Annually provide a full and complete audit report.
  - d. Provide the Policy Committee with the records necessary to describe the financial condition of the BWSR grant agreement.
  - e. Retain fiscal records consistent with the agent's records retention schedule until termination of the agreement (at that time, records will be turned over to *Sand Hill River Watershed District*).
  
8. **Grant Administration:** *West Polk SWCD* will act as the grant administrator for the purposes of this Agreement and agrees to provide the following services:
  - a. Accept all day-to-day responsibilities associated with the implementation of the BWSR grant agreement for developing a watershed-based plan, including being the primary BWSR contact for the *One Watershed, One Plan* Grant Agreement and being responsible for BWSR reporting requirements associated with the grant agreement.
  - b. Provide the Policy Committee with the records necessary to describe the planning condition of the BWSR grant agreement.
  
9. **Authorized Representatives:** The following persons will be the primary contacts for all matters concerning this Agreement:

Polk County  
 County Commissioner: Jerry Jacobson  
 Email: printingpoint@gvtel.com  
 Telephone: 218-280-8098

East Polk SWCD  
 District Supervisor: Ken Pederson  
 Email: kennyp300@yahoo.com  
 Telephone: 218-563-2777

Norman County  
 County Commissioner: Steven Jacobson  
 Email: Steve.Jacobson@co.norman.mn.us  
 Telephone: (218) 861-6155

West Polk SWCD  
 District Supervisor: Chris Cournia  
 Email: Farmer\_taz@hotmail.com  
 Telephone: 218-280-1332

Mahnomen County  
 County Commissioner: Darvin Schoenborn  
 Email: Darvin.schoenborn@co.mahnomen.mn.us  
 Telephone: 218-935-2389

Norman SWCD  
 District Supervisor: Erik Rockstad  
 Email: gbgejr@loretel.net  
 Telephone: 218-584-5169

Mahnomen SWCD

District Supervisor: Peter Revier

Email:

Telephone: 218-935-2987

Sand Hill River Watershed District

Manager: Don Andringa

Email:

Telephone: 218-289-7273







## Appendix G. References

---

Department of Natural Resources (DNR), 2021. Minnesota Climate Trends. Available at:

<https://arcgis.dnr.state.mn.us/ewr/climatetrends/>

Minnesota Department of Health (MDH), accessed 2023. MN data: Private Wells-Arsenic

Minnesota State University Moorhead (MSUM). N.d. Pre-Settlement of the Red River Valley. Available at: <https://www.mnstate.edu/library/university-archives/northwest-mn/collections/s711/red-river-valley-history/>

Minnesota Sustainable Farming Association. (2016). Soil Health Tools and Techniques for Small-Scale Producers. Minneapolis, MN. <https://drive.google.com/file/d/1ZkhDSr5ot-5L8Pln3I6Nz2IUG3gRBHzV/view>

Minnesota Pollution Control Agency (MPCA). 2014a. Sand Hill River Watershed Biotic Stressor Identification Report.

Minnesota Pollution Control Agency (MPCA). 2014b. Sand Hill River Watershed Monitoring and Assessment Report.

Minnesota Pollution Control Agency (MPCA). 2017. Marsh River Watershed Monitoring and Assessment Report.

Minnesota Pollution Control Agency (MPCA). 2021. Pharmaceuticals and chemicals of concern in Minnesota lakes. Document number: tdr-g1-21

Polk County. 2017. Polk County Local Water Plan.

Sand Hill River Watershed District (SHRWD). 2012. Watershed Management Plan.

United States Department of Agriculture (USDA). N.d. Rapid Watershed Assessment Sandhill-Wilson.

U.S. Fish and Wildlife Service Information for Planning and Consultation (USFWS). 2021. Accessed: 8/24/2022. Endangered Species Minnesota-Wisconsin Ecological Field Services. Available at: <https://ecos.fws.gov/ipac/>

Department of Natural Resources (DNR). 2017. Watershed Context Report: Sandhill River.

Department of Natural Resources (DNR). 2019. Climate Summary for Watersheds: Red River of the North- Sandhill River.

U.S. Census Bureau. (2020). 2016-2020 American Community Survey Narrative Profiles. Retrieved from <https://www.census.gov/acs/www/data/data-tables-and-tools/narrative-profiles/2020/index.php>

